



1 NO POVERTY





SDGs 1 | NO POVERTY



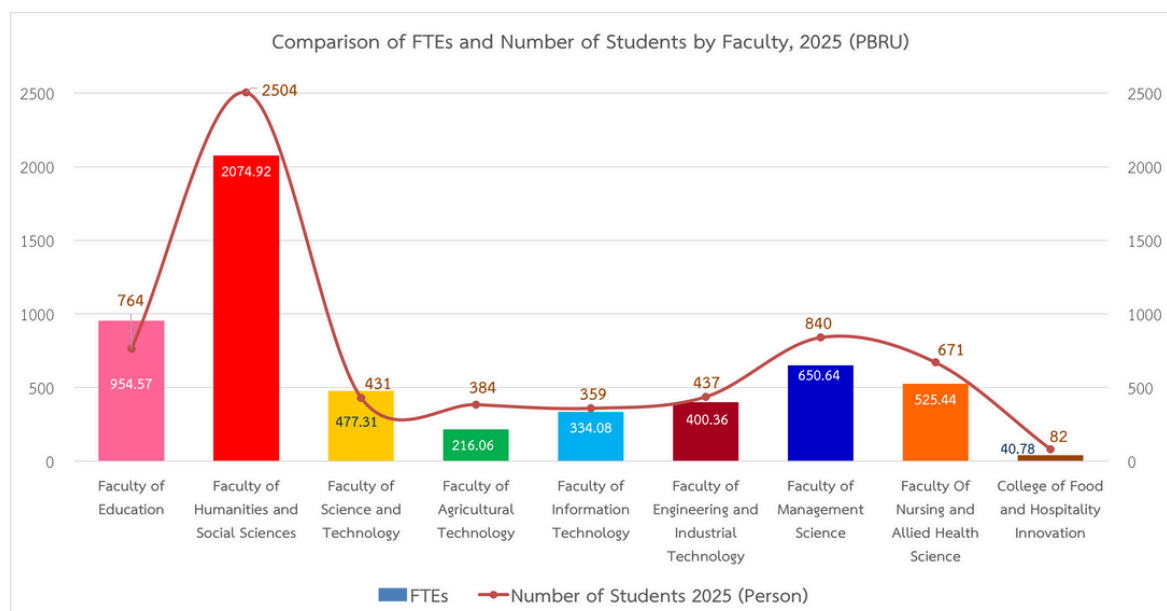
1.2 Proportion of students receiving financial aid to attend university because of poverty



1.2.1 Low income students receiving financial aid

In the academic year 2024 the Phetchaburi Rajabhat University recorded a total of 5,674.16 Full-Time Equivalent (FTE) students across all academic programs and levels, including degree and certificate programs. This total encompasses both full-time and part-time students, as well as graduate programs. The breakdown of FTEs by faculty is as follows:

- | | |
|---|--|
| 1. Faculty of Education - 954.57 FTE | 6. Faculty of Engineering and Industrial Technology - 400.36 FTE |
| 2. Faculty of Humanities and Social Sciences - 2,074.92 FTE | 7. Faculty of Management Science - 650.64 FTE |
| 3. Faculty of Science and Technology - 477.31 FTE | 8. Faculty of Nursing and Health Science - 525.44 FTE |
| 4. Faculty of Agricultural Technology - 216.06 FTE | 9. College of Food Innovation and Service - 40.78 FTE |
| 5. Faculty of Information Technology - 334.08 FTE | |





Phetchaburi Rajabhat University has assigned the Division of Student Development to be responsible for student development missions, which include providing student services and welfare, managing both internal and external scholarship programs, and facilitating access to the Student Loan Fund (SLF) for financially disadvantaged students. These initiatives aim to ensure that students from low-income backgrounds have equitable access to higher education and are able to successfully complete their studies. The financial support provided covers tuition fees as well as other essential educational expenses.

In the academic year 2024 (B.E. 2567), Phetchaburi Rajabhat University had a total of 6,472 students enrolled across all programs. Among them, 2,960 students received financial assistance through various schemes, representing all academic programs offered. The breakdown of financial aid recipients is as follows:

1. Student Loan Fund (SLF) recipients:

A total of 2,380 students received financial aid through the Student Loan Fund covering both tuition fees and living expenses.

2. External Scholarships:

A total of 580 students received scholarships from external sources, granted through collaborative agreements between the university and external organizations. These scholarships are awarded annually until the students complete their studies.

3. Student Employment Program:

The university also implements a Student Employment Program, allowing students to earn income while studying to help reduce financial burdens and improve access to education. This initiative not only supports students economically but also develops their responsibility, work skills, and self-reliance.

1.3 University anti-poverty programmes

Phetchaburi Rajabhat University implements systematic programmes and measures to address poverty among its students. The process begins with the collection and assessment of student family background and economic conditions to identify and prioritize students in financial need. Following this assessment, the university provides appropriate support and assistance to ensure that these students can access and complete their education successfully.

Such support includes scholarships, facilitation of student loans, and various welfare services.

1.3.1 Bottom financial quintile admission target

Phetchaburi Rajabhat University places great importance on providing educational opportunities for students from low-income families by offering various scholarships and financial assistance programs each academic year to cover tuition fees and living expenses.

In the academic year 2024, the university allocated a total of 13,198,265 THB to support 580 scholarships, classified as follows:



1. Continuing Scholarships: 356 scholarships, totaling 10,988,265 Baht
 - Tuition Fee Exemption Scholarships: 146 scholarships, totaling 3,624,000 Baht
 - Educational Expense Support Scholarships: 210 scholarships, totaling 7,364,265 Baht

2. Grants: 224 scholarships, totaling 2,210,000 Baht

These scholarships are designed to ensure equitable access to higher education and help students from disadvantaged backgrounds complete their studies without financial burden.



These scholarships include both internal and external funding sources through collaborations with partner organizations such as the General Prem Tinsulanonda Statesman Foundation, Thai Beverage Public Company Limited, and the Royal Patronage Scholarship under Her Royal Highness Princess Maha Chakri Sirindhorn.

1. Continuing Scholarships are funded by internal sources such as the Phetchaburi Rajabhat University Promotion Committee Fund and the Phetchaburi Rajabhat Diamond Fund, as well as by external organizations including the General Prem Tinsulanonda Statesman Foundation, Thai Beverage Public Company Limited, and the Royal Scholarship under the Patronage of Her Royal Highness Princess Maha Chakri Sirindhorn, The Princess Royal of Thailand.

These scholarships are awarded annually and continue until students complete their studies, ensuring long-term educational support for financially disadvantaged students.

2. Grants are supported by internal funds such as the Phetchaburi Rajabhat University Promotion Committee Fund and the Alumni Association Fund, along with external donors such as Assistant Professor Phoolsawat Moombansaow, Assistant Professor Dr. Praornuch Hongthong, and Thai Stream Service and Supply Co., Ltd.

These initiatives reflect the university's strong commitment to promoting educational equality, social mobility, and sustainable development, ensuring that students from low-income households have the opportunity to pursue and complete higher education successfully.



1.3.2 Bottom financial quintile student success

Phetchaburi Rajabhat University is committed to ensuring that all students are able to complete their studies successfully in accordance with the Regulations on Undergraduate Education, B.E. 2567 (2024).

To support this goal, the university has established a Student Loan Fund (SLF) Unit, enabling students from low-income families to access continuous financial support throughout the duration of their studies until graduation.

Eligibility for the SLF program is based on a household income threshold of no more than 360,000 Baht per year. The university provides detailed guidance and information services through the Division of Student Development's official website, ensuring convenient access to information and assistance for all loan applicants.

In addition to the SLF, the university allocates a total of 580 scholarships annually – both internal and external – to further assist students from low-income backgrounds. This continuous financial and advisory support helps ensure that economically disadvantaged students can pursue and complete their higher education without interruption.



1.3.3 Low-income student support

Phetchaburi Rajabhat University provides comprehensive welfare services and support activities to enhance the quality of life for students from low-income families. The key initiatives include:

1. Food and income-generating support

The university operates affordable cafeterias and convenience shops for students, staff, and the general public. In addition, the university has established the “Khanod Market”, a simulated business marketplace open every Tuesday, Wednesday, and Thursday. This market provides opportunities for students and staff to sell food, beverages, and various products, promoting hands-on learning experiences and income generation during their studies.

Furthermore, the Faculty of Management Science organizes real-business training projects such as the “Iced Tea Sales Project”, where students practice entrepreneurial skills and earn supplementary income alongside their academic pursuits.



2. Affordable student housing

Phetchaburi Rajabhat University provides affordable residential facilities to reduce accommodation expenses for students. The university operates four student dormitories, as well as additional residences for faculty and staff, offering rooms at subsidized welfare rates to ensure equitable access to safe and quality housing at reasonable costs.

Each dormitory is staffed with on-site residence officers available 24 hours a day to ensure safety, provide assistance, and offer personal guidance to student residents. These dormitories are designed not only as living spaces but also as learning-supportive environments that foster a sense of community, comfort, and well-being within a secure and caring atmosphere.





3. Sustainable transportation services

The university offers free electric shuttle bus services for students, staff, and visitors within the campus. This initiative promotes convenient, environmentally friendly, and sustainable transportation, contributing to a better campus living experience.



4. Student welfare and health services

The university has established a Student Welfare Fund to provide financial assistance for medical expenses in cases of accidents or death. Additionally, mental health and life counseling services are available, along with support through the Disability Support Services Center (DSS) to ensure inclusivity and equal access for all students.





5. Student guidance and counseling services

Through the Division of Student Development, under the Office of the President, the university offers comprehensive academic, personal, and financial counseling services. These programs aim to ensure that students maintain a balanced university life and successfully complete their education with quality outcomes.



1.3.4 Bottom financial quintile student support

Phetchaburi Rajabhat University places great importance on promoting educational opportunities for students from low-income families by establishing the Student Loan Fund (SLF) to manage and support equitable access to higher education.

The SLF is a government initiative that provides financial assistance covering tuition fees, living expenses, and other education-related costs. Borrowers are not required to pay interest while studying and begin repayment within two years after graduation, with a low interest rate of only 1% per year and a repayment period of up to 15 years. This program significantly reduces the financial burden on economically disadvantaged families and promotes educational equality.

Furthermore, the university has established a dedicated Student Loan Service Unit to provide comprehensive consultation and assistance throughout the loan process — including application, document submission, progress tracking, and data coordination with relevant agencies.

As a result, 100% of eligible applicants successfully receive loan approval, reflecting the university's strong commitment to creating inclusive educational access and effectively reducing social inequality through practical financial support mechanisms.





In the academic year 2024, Phetchaburi Rajabhat University implemented additional support programmes for low-income students by offering opportunities for part-time employment while studying, both during official working hours and on weekends.

Under this policy, students may work up to 8 hours per day and receive compensation at a rate of 35 Baht per hour for undergraduate students enrolled in regular programmes.

This initiative aims not only to alleviate students' financial burdens, but also to develop essential personal attributes such as responsibility, discipline, good conduct, and public-mindedness. Moreover, it provides students with valuable work experience alongside academic learning, enhancing their readiness for future employment after graduation.



1.3.5 Low or lower-middle income countries student support

Phetchaburi Rajabhat University places strong emphasis on promoting equitable access to higher education by providing scholarships to students from low-income and lower-middle-income families on an annual basis.

These scholarships include both internal university funds and external funding sources, supported through collaborations with government agencies, private organizations, and charitable foundations.

Eligible students must meet the criteria specified by each scholarship programme. The university ensures a transparent and fair selection process to guarantee that assistance is provided to students who are genuinely in financial need and demonstrate academic potential. Scholarships are granted both as annual awards and as continuing scholarships that support students until they complete their studies.



1.4 Community anti-poverty programmes

Phetchaburi Rajabhat University carries out a core mission in local development and community empowerment, aiming to enhance the quality of life and promote sustainable poverty alleviation within the region. The university integrates teaching, research, and academic services with area-based development strategies, addressing multiple dimensions – economic, social, cultural, and environmental – to ensure holistic and long-term community growth.

In the academic year 2024 (B.E. 2567), the university implemented initiatives in accordance with the Phetchaburi Rajabhat University Strategic Development Plan, which focuses on sustainable community development and economic inequality reduction.

Key initiatives include academic service projects for income generation, local cultural preservation programmes, and entrepreneurship promotion activities within the community.

One prominent example is the Phetchaburi Rajabhat University Business Incubator (PBRU – UBI), which supports local entrepreneurs, small enterprises, and community groups in developing sustainable business models and value-added local products.

1.4.1 Local start-up assistance

Phetchaburi Rajabhat University promotes local entrepreneurship and community-based economic development through various programmes and projects aimed at empowering individuals and communities to become self-reliant. Key initiatives include:

1. Phetchaburi Rajabhat University Business Incubator (PBRU-UBI)

The university established the University Business Incubator (UBI) to support and develop local entrepreneurs by enhancing their business knowledge, skills, and capacity for sustainable growth.

The incubator focuses on start-up entrepreneur development, offering training and consultation in business management, product innovation, and modern marketing. It also provides advisory services in areas such as business establishment, product certification, packaging design, and online sales expansion.

These activities aim to strengthen the local economy and promote sustainable community development.



2. "One Faculty, One District" Project

The "One Faculty, One District" project aligns with the university's missions in academic services, cultural preservation, and community-based research across the districts of Phetchaburi Province.

Major activities include exhibitions, practical training workshops, marketing promotion, and local business network development.

The project enhances economic resilience and supports the sustainability of community products through local engagement and knowledge transfer.



3. Projects under the Rajabhat University for Local Development Strategy

Community Quality of Life and Local Economy Enhancement Project: Improving the quality of life and strengthening grassroots economies in ethnic communities through local wisdom, in line with royal-initiated projects.



- "SEA TO MOUNTAIN 2025" Project: Enhancing the potential of local communities through Soft Power based on cultural and artistic identity in Upper Prachuapkhirikhan Province (Pranburi - Sam Roi Yot areas), promoting cultural tourism and local entrepreneurship.



- Agricultural Debt Rehabilitation and Livelihood Development Project: Implemented in the Nongphlap - Kladluang Royal Project areas, Prachuap Khiri Khan Province, to improve farmers' quality of life and reduce debt in accordance with the Philosophy of Sufficiency Economy



1.4.2 Local start-up financial assistance

Phetchaburi Rajabhat University actively promotes local start-up businesses and entrepreneurship by providing financial, knowledge-based, and academic resource support to enhance local communities' capacity for sustainable income generation and self-reliance.

Under the operation of the Phetchaburi Rajabhat University Business Incubator (PBRU-UBI), the university offers consultation services in business management, product development, branding, and online marketing. These services aim to help entrepreneurs establish strong business foundations and achieve long-term growth.

A notable example is the "Upgrading Tha Khoi Community Products for Commercial Market Development Project" organized by the Faculty of Management Science. The project includes hands-on workshops on organic agriculture, product processing, brand communication, and both online and offline marketing strategies. The initiative enhances the market potential of local products, adds value to agricultural goods, and transforms community enterprises into commercially competitive ventures.

The university also strengthens the relationship between academia and local communities through financial assistance, business consultation, and academic services tailored to local needs. These initiatives leverage the expertise of university personnel and researchers to promote grassroots economic development, income distribution, and social equity.



Furthermore, the university continues to foster collaboration between scholars and community groups, offering advisory and financial support consistent with local contexts to enhance the economic resilience and capacity of people at the grassroots level.

1.4.3 Programmes for services access

Phetchaburi Rajabhat University implements various training and skill development programmes to ensure equitable access to educational resources and services for communities, students, and university personnel.

These programmes aim to strengthen professional skills, promote lifelong learning, and enhance quality of life through practical and inclusive education initiatives.

Key programmes include

1. Training Course: “Developing Smart Agricultural Systems for Organic Farming”

Organized by the Faculty of Education, this training programme focuses on applying “Internet of Things” (IoT) technologies to organic farming systems. Participants gain knowledge and skills in using smart agriculture technologies to improve crop efficiency, reduce production costs, and promote environmentally friendly agricultural practices.

The course enhances digital and technological competencies among farmers and educators, fostering the development of modern and sustainable organic agriculture systems.



2. Training and Skill Development Course: “Assembly & Wiring Control Panel - Japanese Techniques”

Conducted by the Faculty of Engineering and Industrial Technology, in collaboration with the Vocational Training and Skill Testing Center and the JFAC Training Center, this programme develops technical and electrical engineering skills among students, staff, and the general public.

The training emphasizes hands-on practice, enabling participants to design, manufacture, assemble, and install electrical control panels, as well as improve existing electrical systems. The programme directly responds to labor market needs and enhances participants’ employability.



3. Workshop: “Mobile Photography and Canva Design for Public Relations”

Organized by the Division of Student Development, this workshop aims to upskill graduates and alumni in creative communication. Participants learn mobile photography techniques and design skills using Canva to produce effective public relations materials for professional and organizational use.



4. Workshop: “Using Online Platforms to Promote Community Learning in Tham Rong”

Conducted by the Office of Academic Resources and Information Technology, this outreach project promotes access to educational and digital services for local communities.

The workshop, held in Tham Rong Village, trains residents and local officials in community data management, accessing the Tham Rong Community Tourism Website, and using online booking systems for tourism services.

This initiative enhances digital literacy and ensures that people in remote areas can conveniently access information and university-supported online services.

These programmes facilitate community access to educational and technological resources, enhance vocational and digital skills, and promote sustainable community development through inclusive and participatory learning.



1.4.4 Policy addressing poverty

Phetchaburi Rajabhat University has established a Strategic Policy and Development Framework (2022-2026) that emphasizes local development, quality of life enhancement, and sustainable reduction of economic and social inequality.

The university integrates its core missions – teaching, research, and academic services – to strengthen local communities and empower people to achieve sustainable livelihoods.

The university is committed to transferring knowledge, technology, and innovation to local communities in alignment with their specific needs, while also expanding regional and international collaboration to foster economic, educational, and social sustainability.

This policy framework is reflected in a series of projects, collaborations, and initiatives addressing poverty reduction from multiple dimensions – economic, cultural, and technological – to improve income, skills, and community resilience.

Key policy-driven programmes and collaborations

1. Cultural and Local Wisdom Promotion Partnerships

- Institute for Research and Promotion of Arts and Culture, Phetchaburi Rajabhat University, signed a Memorandum of Understanding (MOU) with the Council of Arts and Culture of Rajabhat Universities of Thailand and the Department of Cultural Promotion, Ministry of Culture, to promote the conservation, dissemination, and development of arts, culture, and local wisdom.

- The university organized a seminar on “Enhancing Soft Power through Local Cuisine for Creative Economy Development”, encouraging dialogue on adding economic value to local products through cultural innovation.

- The university annually presents the “Rajabhat Khunakhon Award” and “Bhumirajabhat Award” to honor individuals who have made outstanding contributions to the preservation and promotion of Thai arts, culture, and local wisdom.



2. Community Product Development Projects

- Empowering farmers and local entrepreneurs with knowledge in production, processing, and marketing to improve business sustainability.
- Promoting value-added agricultural processing and supporting both online and offline commercialization to expand access to competitive markets.

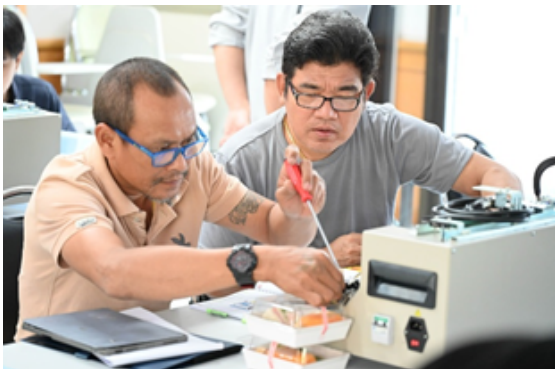


3. Vocational and Technological Skill Training Programmes

Aimed at developing professional and technological competencies among citizens, students, and university staff.

Key courses include:

- "Smart Agriculture Systems for Organic Farming (IoT)" - promoting modern agricultural technology.
- "Assembly & Wiring Control Panel" - enhancing engineering and electrical technical skills.
- "Mobile Photography and Canva Design for Public Relations" - fostering digital communication and creative design skills.



4. Impact Levels

- Local/Regional Level

Promoting employment creation and income generation for farmers and entrepreneurs while strengthening grassroots economies in Phetchaburi Province and neighboring areas.

- Regional/National Level

Establishing a nationwide collaboration network among Rajabhat Universities through the Council of Arts and Culture and government agencies to address poverty across economic, cultural, and educational dimensions – contributing to long – term sustainable development at the national level.

As a result of the anti-poverty projects and policies implemented by Phetchaburi Rajabhat University, local communities and entrepreneurs have experienced significant income growth through the application of local wisdom and the development of value-added community products.

Meanwhile, university personnel and students have gained new knowledge, hands-on experience, and practical learning opportunities through their participation in academic service activities and community development projects, fostering experiential learning and a strong sense of social responsibility.

Furthermore, these initiatives have fostered the establishment of collaborative networks among universities, government agencies, private sectors, and local communities, driving integrated and sustainable local development.

Consequently, the quality of life of local residents has been substantially improved, enabling them to achieve self-reliance and maintain economic, cultural, and social stability at both the local and national levels.

