



Phetchaburi Rajabhat University

REPORT 2024 - 2025



คณะกรรมการพัฒนาอย่างยั่งยืน
Sustainable Development Goal SDGs

กลุ่มงานพัฒนาระบบคุณภาพการศึกษา สำนักงานอธิการบดี



Phetchaburi Rajabhat University

Description of Institution

Phetchaburi Rajabhat University has established a comprehensive sustainable development framework that encompasses all levels of its governance structure — ranging from the University Council and senior executives to academic personnel and support staff across all units. All initiatives and projects are implemented under six strategic directions outlined in the University Development Plan, which align with the policies of the University Council, the National Strategy, and other key national development frameworks.

Through its strong commitment and effective implementation during the 2024 academic year, Phetchaburi Rajabhat University achieved distinguished recognition in the Times Higher Education (THE) Impact Rankings 2025 for the Sustainable Development Goals (SDGs). The university was ranked:

4th among Rajabhat Universities nationwide
24th among all universities in Thailand
Within the 801-1000 band globally

Additionally, the university secured 1st place among Rajabhat Universities in two key SDG categories:

SDG 5: Gender Equality

SDG 7: Affordable and Clean Energy

These achievements reaffirm Phetchaburi Rajabhat University's position as a "University for Sustainable Local Development", committed to advancing academic excellence, promoting social responsibility, and fostering sustainability at both the national and global levels.





University Mission

1. Produce graduates according to the university's identity with quality, good attitude, morality leading to knowledge, good citizenship in society, love and commitment to the locality, promoting lifelong learning through the principle of equitable distribution of educational opportunities.
2. Strengthen the teaching profession, produce and develop teachers and educational personnel to have quality and standards suitable for being an advanced profession.
3. Research to create a body of knowledge and innovation, focusing on integration for the benefit of local and national development in a concrete way to solve spatial problems.
4. Lead the royal initiative to transfer knowledge, technology, and innovation for local development and provide academic services by collaborating with all sectors to meet the requirements of the community, society, and nation and publish to the international.
5. Enhance the efficiency of contemporary management according to the principles of good governance by adopting the Sufficiency Economy Philosophy.





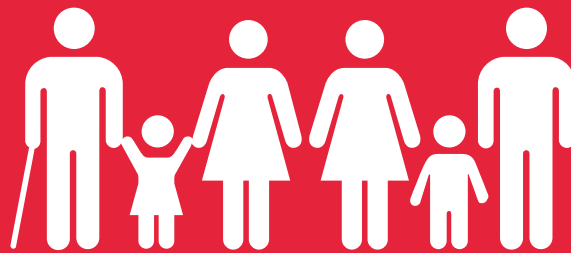
CONTENTS

SECTION	PAGE
Description of Institution	(1)
University mission	(2)
Contents	(3)
PBRU-SDGs	(4)
SDGs 1 NO POVERTY	1 – 16
SDGs 2 Zero Hunger	17 – 33
SDGs 3 Good Health and Well-being	34 – 51
SDGs 4 Quality Education	52 – 66
SDGs 5 Gender Equality	67 – 77
SDGs 7 Affordable and Clean Energy	78 – 91
SDGs 17 Partnerships for the Goals	92 – 104





1 NO POVERTY





SDGs 1 | NO POVERTY



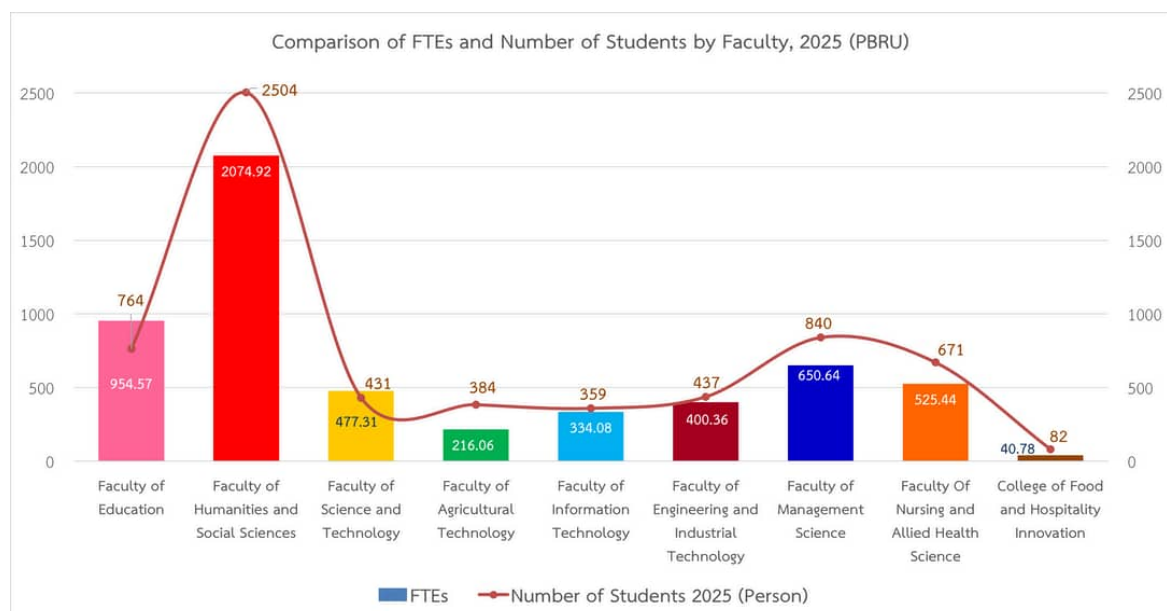
1.2 Proportion of students receiving financial aid to attend university because of poverty



1.2.1 Low income students receiving financial aid

In the academic year 2024 the Phetchaburi Rajabhat University recorded a total of 5,674.16 Full-Time Equivalent (FTE) students across all academic programs and levels, including degree and certificate programs. This total encompasses both full-time and part-time students, as well as graduate programs. The breakdown of FTEs by faculty is as follows:

- | | |
|---|--|
| 1. Faculty of Education - 954.57 FTE | 6. Faculty of Engineering and Industrial Technology - 400.36 FTE |
| 2. Faculty of Humanities and Social Sciences - 2,074.92 FTE | 7. Faculty of Management Science - 650.64 FTE |
| 3. Faculty of Science and Technology - 477.31 FTE | 8. Faculty of Nursing and Health Science - 525.44 FTE |
| 4. Faculty of Agricultural Technology - 216.06 FTE | 9. College of Food Innovation and Service - 40.78 FTE |
| 5. Faculty of Information Technology - 334.08 FTE | |





Phetchaburi Rajabhat University has assigned the Division of Student Development to be responsible for student development missions, which include providing student services and welfare, managing both internal and external scholarship programs, and facilitating access to the Student Loan Fund (SLF) for financially disadvantaged students. These initiatives aim to ensure that students from low-income backgrounds have equitable access to higher education and are able to successfully complete their studies. The financial support provided covers tuition fees as well as other essential educational expenses.

In the academic year 2024 (B.E. 2567), Phetchaburi Rajabhat University had a total of 6,472 students enrolled across all programs. Among them, 2,960 students received financial assistance through various schemes, representing all academic programs offered. The breakdown of financial aid recipients is as follows:

1. Student Loan Fund (SLF) recipients:

A total of 2,380 students received financial aid through the Student Loan Fund covering both tuition fees and living expenses.

2. External Scholarships:

A total of 580 students received scholarships from external sources, granted through collaborative agreements between the university and external organizations. These scholarships are awarded annually until the students complete their studies.

3. Student Employment Program:

The university also implements a Student Employment Program, allowing students to earn income while studying to help reduce financial burdens and improve access to education. This initiative not only supports students economically but also develops their responsibility, work skills, and self-reliance.

1.3 University anti-poverty programmes

Phetchaburi Rajabhat University implements systematic programmes and measures to address poverty among its students. The process begins with the collection and assessment of student family background and economic conditions to identify and prioritize students in financial need. Following this assessment, the university provides appropriate support and assistance to ensure that these students can access and complete their education successfully.

Such support includes scholarships, facilitation of student loans, and various welfare services.

1.3.1 Bottom financial quintile admission target

Phetchaburi Rajabhat University places great importance on providing educational opportunities for students from low-income families by offering various scholarships and financial assistance programs each academic year to cover tuition fees and living expenses.

In the academic year 2024, the university allocated a total of 13,198,265 THB to support 580 scholarships, classified as follows:



1. Continuing Scholarships: 356 scholarships, totaling 10,988,265 Baht
 - Tuition Fee Exemption Scholarships: 146 scholarships, totaling 3,624,000 Baht
 - Educational Expense Support Scholarships: 210 scholarships, totaling 7,364,265 Baht

2. Grants: 224 scholarships, totaling 2,210,000 Baht

These scholarships are designed to ensure equitable access to higher education and help students from disadvantaged backgrounds complete their studies without financial burden.



These scholarships include both internal and external funding sources through collaborations with partner organizations such as the General Prem Tinsulanonda Statesman Foundation, Thai Beverage Public Company Limited, and the Royal Patronage Scholarship under Her Royal Highness Princess Maha Chakri Sirindhorn.

1. Continuing Scholarships are funded by internal sources such as the Phetchaburi Rajabhat University Promotion Committee Fund and the Phetchaburi Rajabhat Diamond Fund, as well as by external organizations including the General Prem Tinsulanonda Statesman Foundation, Thai Beverage Public Company Limited, and the Royal Scholarship under the Patronage of Her Royal Highness Princess Maha Chakri Sirindhorn, The Princess Royal of Thailand.

These scholarships are awarded annually and continue until students complete their studies, ensuring long-term educational support for financially disadvantaged students.

2. Grants are supported by internal funds such as the Phetchaburi Rajabhat University Promotion Committee Fund and the Alumni Association Fund, along with external donors such as Assistant Professor Phoolsawat Moombansaow, Assistant Professor Dr. Praornuch Hongthong, and Thai Stream Service and Supply Co., Ltd.

These initiatives reflect the university's strong commitment to promoting educational equality, social mobility, and sustainable development, ensuring that students from low-income households have the opportunity to pursue and complete higher education successfully.



1.3.2 Bottom financial quintile student success

Phetchaburi Rajabhat University is committed to ensuring that all students are able to complete their studies successfully in accordance with the Regulations on Undergraduate Education, B.E. 2567 (2024).

To support this goal, the university has established a Student Loan Fund (SLF) Unit, enabling students from low-income families to access continuous financial support throughout the duration of their studies until graduation.

Eligibility for the SLF program is based on a household income threshold of no more than 360,000 Baht per year. The university provides detailed guidance and information services through the Division of Student Development's official website, ensuring convenient access to information and assistance for all loan applicants.

In addition to the SLF, the university allocates a total of 580 scholarships annually – both internal and external – to further assist students from low-income backgrounds. This continuous financial and advisory support helps ensure that economically disadvantaged students can pursue and complete their higher education without interruption.



1.3.3 Low-income student support

Phetchaburi Rajabhat University provides comprehensive welfare services and support activities to enhance the quality of life for students from low-income families. The key initiatives include:

1. Food and income-generating support

The university operates affordable cafeterias and convenience shops for students, staff, and the general public. In addition, the university has established the “Khanod Market”, a simulated business marketplace open every Tuesday, Wednesday, and Thursday. This market provides opportunities for students and staff to sell food, beverages, and various products, promoting hands-on learning experiences and income generation during their studies.

Furthermore, the Faculty of Management Science organizes real-business training projects such as the “Iced Tea Sales Project”, where students practice entrepreneurial skills and earn supplementary income alongside their academic pursuits.



2. Affordable student housing

Phetchaburi Rajabhat University provides affordable residential facilities to reduce accommodation expenses for students. The university operates four student dormitories, as well as additional residences for faculty and staff, offering rooms at subsidized welfare rates to ensure equitable access to safe and quality housing at reasonable costs.

Each dormitory is staffed with on-site residence officers available 24 hours a day to ensure safety, provide assistance, and offer personal guidance to student residents. These dormitories are designed not only as living spaces but also as learning-supportive environments that foster a sense of community, comfort, and well-being within a secure and caring atmosphere.





3. Sustainable transportation services

The university offers free electric shuttle bus services for students, staff, and visitors within the campus. This initiative promotes convenient, environmentally friendly, and sustainable transportation, contributing to a better campus living experience.



4. Student welfare and health services

The university has established a Student Welfare Fund to provide financial assistance for medical expenses in cases of accidents or death. Additionally, mental health and life counseling services are available, along with support through the Disability Support Services Center (DSS) to ensure inclusivity and equal access for all students.





5. Student guidance and counseling services

Through the Division of Student Development, under the Office of the President, the university offers comprehensive academic, personal, and financial counseling services. These programs aim to ensure that students maintain a balanced university life and successfully complete their education with quality outcomes.



1.3.4 Bottom financial quintile student support

Phetchaburi Rajabhat University places great importance on promoting educational opportunities for students from low-income families by establishing the Student Loan Fund (SLF) to manage and support equitable access to higher education.

The SLF is a government initiative that provides financial assistance covering tuition fees, living expenses, and other education-related costs. Borrowers are not required to pay interest while studying and begin repayment within two years after graduation, with a low interest rate of only 1% per year and a repayment period of up to 15 years. This program significantly reduces the financial burden on economically disadvantaged families and promotes educational equality.

Furthermore, the university has established a dedicated Student Loan Service Unit to provide comprehensive consultation and assistance throughout the loan process — including application, document submission, progress tracking, and data coordination with relevant agencies.

As a result, 100% of eligible applicants successfully receive loan approval, reflecting the university's strong commitment to creating inclusive educational access and effectively reducing social inequality through practical financial support mechanisms.



In the academic year 2024, Phetchaburi Rajabhat University implemented additional support programmes for low-income students by offering opportunities for part-time employment while studying, both during official working hours and on weekends.

Under this policy, students may work up to 8 hours per day and receive compensation at a rate of 35 Baht per hour for undergraduate students enrolled in regular programmes.

This initiative aims not only to alleviate students' financial burdens, but also to develop essential personal attributes such as responsibility, discipline, good conduct, and public-mindedness. Moreover, it provides students with valuable work experience alongside academic learning, enhancing their readiness for future employment after graduation.



1.3.5 Low or lower-middle income countries student support

Phetchaburi Rajabhat University places strong emphasis on promoting equitable access to higher education by providing scholarships to students from low-income and lower-middle-income families on an annual basis.

These scholarships include both internal university funds and external funding sources, supported through collaborations with government agencies, private organizations, and charitable foundations.

Eligible students must meet the criteria specified by each scholarship programme. The university ensures a transparent and fair selection process to guarantee that assistance is provided to students who are genuinely in financial need and demonstrate academic potential. Scholarships are granted both as annual awards and as continuing scholarships that support students until they complete their studies.



1.4 Community anti-poverty programmes

Phetchaburi Rajabhat University carries out a core mission in local development and community empowerment, aiming to enhance the quality of life and promote sustainable poverty alleviation within the region. The university integrates teaching, research, and academic services with area-based development strategies, addressing multiple dimensions – economic, social, cultural, and environmental – to ensure holistic and long-term community growth.

In the academic year 2024 (B.E. 2567), the university implemented initiatives in accordance with the Phetchaburi Rajabhat University Strategic Development Plan, which focuses on sustainable community development and economic inequality reduction.

Key initiatives include academic service projects for income generation, local cultural preservation programmes, and entrepreneurship promotion activities within the community.

One prominent example is the Phetchaburi Rajabhat University Business Incubator (PBRU – UBI), which supports local entrepreneurs, small enterprises, and community groups in developing sustainable business models and value-added local products.

1.4.1 Local start-up assistance

Phetchaburi Rajabhat University promotes local entrepreneurship and community-based economic development through various programmes and projects aimed at empowering individuals and communities to become self-reliant. Key initiatives include:

1. Phetchaburi Rajabhat University Business Incubator (PBRU-UBI)

The university established the University Business Incubator (UBI) to support and develop local entrepreneurs by enhancing their business knowledge, skills, and capacity for sustainable growth.

The incubator focuses on start-up entrepreneur development, offering training and consultation in business management, product innovation, and modern marketing. It also provides advisory services in areas such as business establishment, product certification, packaging design, and online sales expansion.

These activities aim to strengthen the local economy and promote sustainable community development.



2. "One Faculty, One District" Project

The "One Faculty, One District" project aligns with the university's missions in academic services, cultural preservation, and community-based research across the districts of Phetchaburi Province.

Major activities include exhibitions, practical training workshops, marketing promotion, and local business network development.

The project enhances economic resilience and supports the sustainability of community products through local engagement and knowledge transfer.



3. Projects under the Rajabhat University for Local Development Strategy

Community Quality of Life and Local Economy Enhancement Project: Improving the quality of life and strengthening grassroots economies in ethnic communities through local wisdom, in line with royal-initiated projects.



- "SEA TO MOUNTAIN 2025" Project: Enhancing the potential of local communities through Soft Power based on cultural and artistic identity in Upper Prachuapkhirikhan Province (Pranburi - Sam Roi Yot areas), promoting cultural tourism and local entrepreneurship.



- Agricultural Debt Rehabilitation and Livelihood Development Project: Implemented in the Nongphlap - Kladluang Royal Project areas, Prachuap Khiri Khan Province, to improve farmers' quality of life and reduce debt in accordance with the Philosophy of Sufficiency Economy



1.4.2 Local start-up financial assistance

Phetchaburi Rajabhat University actively promotes local start-up businesses and entrepreneurship by providing financial, knowledge-based, and academic resource support to enhance local communities' capacity for sustainable income generation and self-reliance.

Under the operation of the Phetchaburi Rajabhat University Business Incubator (PBRU-UBI), the university offers consultation services in business management, product development, branding, and online marketing. These services aim to help entrepreneurs establish strong business foundations and achieve long-term growth.

A notable example is the "Upgrading Tha Khoi Community Products for Commercial Market Development Project" organized by the Faculty of Management Science. The project includes hands-on workshops on organic agriculture, product processing, brand communication, and both online and offline marketing strategies. The initiative enhances the market potential of local products, adds value to agricultural goods, and transforms community enterprises into commercially competitive ventures.

The university also strengthens the relationship between academia and local communities through financial assistance, business consultation, and academic services tailored to local needs. These initiatives leverage the expertise of university personnel and researchers to promote grassroots economic development, income distribution, and social equity.



Furthermore, the university continues to foster collaboration between scholars and community groups, offering advisory and financial support consistent with local contexts to enhance the economic resilience and capacity of people at the grassroots level.

1.4.3 Programmes for services access

Phetchaburi Rajabhat University implements various training and skill development programmes to ensure equitable access to educational resources and services for communities, students, and university personnel.

These programmes aim to strengthen professional skills, promote lifelong learning, and enhance quality of life through practical and inclusive education initiatives.

Key programmes include

1. Training Course: “Developing Smart Agricultural Systems for Organic Farming”

Organized by the Faculty of Education, this training programme focuses on applying “Internet of Things” (IoT) technologies to organic farming systems. Participants gain knowledge and skills in using smart agriculture technologies to improve crop efficiency, reduce production costs, and promote environmentally friendly agricultural practices.

The course enhances digital and technological competencies among farmers and educators, fostering the development of modern and sustainable organic agriculture systems.



2. Training and Skill Development Course: “Assembly & Wiring Control Panel - Japanese Techniques”

Conducted by the Faculty of Engineering and Industrial Technology, in collaboration with the Vocational Training and Skill Testing Center and the JFAC Training Center, this programme develops technical and electrical engineering skills among students, staff, and the general public.

The training emphasizes hands-on practice, enabling participants to design, manufacture, assemble, and install electrical control panels, as well as improve existing electrical systems. The programme directly responds to labor market needs and enhances participants’ employability.



3. Workshop: “Mobile Photography and Canva Design for Public Relations”

Organized by the Division of Student Development, this workshop aims to upskill graduates and alumni in creative communication. Participants learn mobile photography techniques and design skills using Canva to produce effective public relations materials for professional and organizational use.



4. Workshop: “Using Online Platforms to Promote Community Learning in Tham Rong”

Conducted by the Office of Academic Resources and Information Technology, this outreach project promotes access to educational and digital services for local communities.

The workshop, held in Tham Rong Village, trains residents and local officials in community data management, accessing the Tham Rong Community Tourism Website, and using online booking systems for tourism services.

This initiative enhances digital literacy and ensures that people in remote areas can conveniently access information and university-supported online services.

These programmes facilitate community access to educational and technological resources, enhance vocational and digital skills, and promote sustainable community development through inclusive and participatory learning.



1.4.4 Policy addressing poverty

Phetchaburi Rajabhat University has established a Strategic Policy and Development Framework (2022-2026) that emphasizes local development, quality of life enhancement, and sustainable reduction of economic and social inequality.

The university integrates its core missions – teaching, research, and academic services – to strengthen local communities and empower people to achieve sustainable livelihoods.

The university is committed to transferring knowledge, technology, and innovation to local communities in alignment with their specific needs, while also expanding regional and international collaboration to foster economic, educational, and social sustainability.

This policy framework is reflected in a series of projects, collaborations, and initiatives addressing poverty reduction from multiple dimensions – economic, cultural, and technological – to improve income, skills, and community resilience.

Key policy-driven programmes and collaborations

1. Cultural and Local Wisdom Promotion Partnerships

- Institute for Research and Promotion of Arts and Culture, Phetchaburi Rajabhat University, signed a Memorandum of Understanding (MOU) with the Council of Arts and Culture of Rajabhat Universities of Thailand and the Department of Cultural Promotion, Ministry of Culture, to promote the conservation, dissemination, and development of arts, culture, and local wisdom.

- The university organized a seminar on “Enhancing Soft Power through Local Cuisine for Creative Economy Development”, encouraging dialogue on adding economic value to local products through cultural innovation.

- The university annually presents the “Rajabhat Khunakhon Award” and “Bhumirajabhat Award” to honor individuals who have made outstanding contributions to the preservation and promotion of Thai arts, culture, and local wisdom.



2. Community Product Development Projects

- Empowering farmers and local entrepreneurs with knowledge in production, processing, and marketing to improve business sustainability.
- Promoting value-added agricultural processing and supporting both online and offline commercialization to expand access to competitive markets.

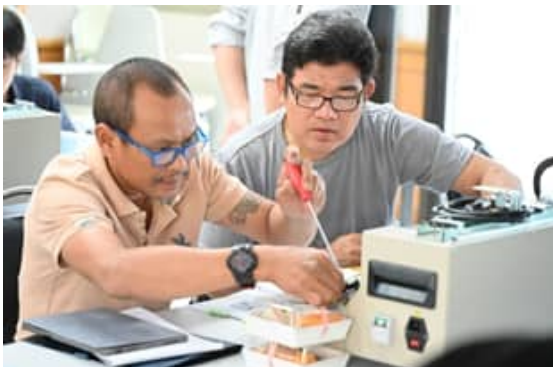


3. Vocational and Technological Skill Training Programmes

Aimed at developing professional and technological competencies among citizens, students, and university staff.

Key courses include:

- "Smart Agriculture Systems for Organic Farming (IoT)" - promoting modern agricultural technology.
- "Assembly & Wiring Control Panel" - enhancing engineering and electrical technical skills.
- "Mobile Photography and Canva Design for Public Relations" - fostering digital communication and creative design skills.



4. Impact Levels

- Local/Regional Level

Promoting employment creation and income generation for farmers and entrepreneurs while strengthening grassroots economies in Phetchaburi Province and neighboring areas.

- Regional/National Level

Establishing a nationwide collaboration network among Rajabhat Universities through the Council of Arts and Culture and government agencies to address poverty across economic, cultural, and educational dimensions – contributing to long – term sustainable development at the national level.

As a result of the anti-poverty projects and policies implemented by Phetchaburi Rajabhat University, local communities and entrepreneurs have experienced significant income growth through the application of local wisdom and the development of value-added community products.

Meanwhile, university personnel and students have gained new knowledge, hands-on experience, and practical learning opportunities through their participation in academic service activities and community development projects, fostering experiential learning and a strong sense of social responsibility.

Furthermore, these initiatives have fostered the establishment of collaborative networks among universities, government agencies, private sectors, and local communities, driving integrated and sustainable local development.

Consequently, the quality of life of local residents has been substantially improved, enabling them to achieve self-reliance and maintain economic, cultural, and social stability at both the local and national levels.





2 ZERO HUNGER





SDG2 | Zero Hunger



2.2 Campus food waste



Phetchaburi Rajabhat University has established a food waste reduction policy aimed at raising awareness and improving the efficiency of sustainable waste management on campus. The initiative seeks to minimize food loss, support food security, and promote responsible consumption and production. The university has implemented educational programmes to enhance understanding among students, staff, and faculty regarding the importance of reducing food waste, while adopting best practices for sustainable management. In addition, food donation activities are organized to assist underprivileged groups in surrounding communities, reflecting the university's strong commitment to environmental sustainability and social responsibility

2.2.1 Campus food waste tracking

Phetchaburi Rajabhat University integrates food waste management as part of its Green University initiative to mitigate climate change through systematic organic waste reduction. Efficient food waste management helps lower greenhouse gas emissions – a major cause of global warming. The university therefore promotes waste segregation at source among staff, students, food vendors, and other campus facilities, encouraging the reuse of organic waste for composting, organic fertilizer production, and animal feed.





Phetchaburi Rajabhat University operates several food-service facilities, including the Student Cafeteria, Centennial Kitchen, The PBRU Heritage Hotel and Tourism Training Center, and the Phetchaburi International Culinary School, which serve students, personnel, and the public. A comprehensive food-waste-management system has been adopted to handle surplus and discarded food from these operations – covering unused ingredients, unsold items, substandard products, and food waste generated from culinary-training activities. The programme aims to minimize waste through proper disposal, reuse, and food donation, aligning with sustainability and community-support objectives.



In 2024, Phetchaburi Rajabhat University installed 60-kilogram food-waste-separation bins at dish-washing stations. The total collected food waste amounted to 5,265 kilograms, averaging 14.54 kilograms per day, and was reused for feeding livestock such as pigs and fish. In addition, Phetchaburi Rajabhat University implemented a color-coded waste-segregation system—blue for general waste, red for hazardous waste, yellow for recyclables, and green for food/organic waste—to instill responsibility and awareness among students and staff, fostering a sustainable campus culture.





2.2.2 Campus food waste

In the academic year 2024 (B.E. 2567), Phetchaburi Rajabhat University had a total population of 7,214 people, comprising 742 staff members and 6,472 students across undergraduate, vocational, master's, and doctoral levels.

Food service operations generated the following average amounts of food waste:

- Student Cafeteria: 13.40 kilograms per day
- Phetchaburi International Culinary School: 0.54 kilograms per day
- Centennial Kitchen, The PBRU Heritage Hotel and Tourism Training Center: 0.60 kilograms per day

kilograms per day

Overall, the total annual amount of food waste produced across all facilities was 5,265 kilograms, reflecting Phetchaburi Rajabhat University's commitment to systematic food-waste monitoring and reduction as part of its sustainable campus management initiatives.



2.3 Student hunger

2.3.1 Student food insecurity and hunger

In 2024, Phetchaburi Rajabhat University implemented the Student Food Insecurity and Hunger Program to address food security and hunger issues among students. The initiative focuses on providing direct food support and promoting self-reliance through the establishment of the Sufficiency Economy Learning Center for Sustainable Area Development, managed by the Faculty of Agricultural Technology.

The center covers approximately 20 rai (about 3.2 hectares) and comprises nine learning stations based on the Philosophy of Sufficiency Economy. The objectives of the center are to:





1. Serve as a food production site for students, staff, and the local community
2. Provide raw materials and agricultural inputs for nearby farmers.
3. Function as a professional training site for students in agricultural disciplines.
4. Act as a technology transfer hub for community knowledge exchange.

The center integrates academic knowledge and modern agricultural innovation to produce short-cycle crops, fast-growing vegetables, mushrooms, eggs, fish, shrimp, and animal feed. These activities not only supply fresh food for consumption but also strengthen students' practical learning and foster food security on campus and within surrounding communities.

บรรยากาศภายใน

" ศูนย์เรียนรู้การเกษตรตามปรัชญาเศรษฐกิจพอเพียง "



การเพาะเลี้ยงสัตว์น้ำเศรษฐกิจ



พืชผักไฮโดรโปนิกส์



การผลิตพืชโตเร็วและพืชสมุนไพร



2.3.2 Students hunger interventions

Phetchaburi Rajabhat University provides various food and beverage facilities to ensure that students and staff have equitable access to affordable and nutritious meals. The services and facilities include:

1. Main Cafeteria (2nd Floor)

The cafeteria houses 12 food and beverage outlets, consisting of:

- 2 curry and rice stalls
- 2 beverage shops
- 2 chicken rice shops
- 1 made-to-order food stall
- 1 Korean fried chicken shop
- 3 noodle stalls
- 1 fresh fruit shop



2. Dining Facilities

Two dining venues offer a variety of affordable menus, featuring seasonal and local dishes:

- Centennial Kitchen, The PBRU Heritage Hotel and Tourism Training Center
- Phetchaburi International Culinary School, Faculty of Science and Technology



3. Convenience Store (7-Eleven)

A convenience store on campus provides a wide range of food, beverages, and daily necessities for students and staff.



4. "Kanod Market"

Organized by the Division of Student Development, Kanod Market operates at Green Park behind the student dormitories every Tuesday to Thursday. The market aims to:

- Develop students' entrepreneurial competencies through social engineering and practical business experience.
- Promote business and financial literacy by allowing students to plan investments and manage profits.
- Encourage self-reliance and sustainable income generation through student-run enterprises.
- Serve as an accessible marketplace for food, drinks, and consumer goods for students, both on- and off-campus, as well as for the general public.

All these facilities are designed to provide accessible, high-quality, and affordable food and products, ensuring that students and university personnel can maintain good nutrition and well-being while fostering an entrepreneurial mindset and community engagement.



2.3.3 Sustainable food choices on campus

Phetchaburi Rajabhat University provides a variety of accessible and inclusive food options on campus to promote sustainable and healthy eating. The second floor of the Niwat Samorsorn Building serves as the main food center, comprising 10 food stalls, 2 beverage shops, Centennial Kitchen (The PBRU Heritage), the Phetchaburi International Culinary School, and one convenience store. These facilities offer diverse menus that cater to different dietary preferences, including Halal food for Muslim consumers and vegetarian meals for health-conscious individuals or those who avoid animal products.



In addition, Phetchaburi Rajabhat University established the Sufficiency Economy Agricultural Learning Center to produce safe and sustainable food for students, staff, and the community. The center operates under the collaboration of the Faculty of Agricultural Technology, Faculty of Management Science, Faculty of Humanities and Social Sciences, Faculty of Engineering and Industrial Technology, Faculty of Nursing and Health Science, and other university units. It also cooperates with external agencies to develop participatory organic farming demonstration areas following the Participatory Guarantee System (PGS), SCE-PGS standards, and the New Theory Agriculture principles of the Land Development Department.

The center integrates multiple agricultural disciplines, including:

1. Crop production: fruits, vegetables, herbs, mushrooms, and ornamental plants
2. Aquaculture: economic aquatic species such as catfish and seaweed
3. Livestock: laying hens, pigs, cattle, goats, and animal feed production

These operations encompass the entire agricultural value chain—from pre-harvest and production to post-harvest and distribution—aiming to ensure a sustainable and safe food supply for the campus. The center also serves as a hub for research, knowledge transfer, and agricultural technology development, while providing high-quality raw materials and products to both the university and local farmers. This initiative strengthens the local economy and supports sustainable lifestyles within the community.



2.3.4 Healthy and affordable food choices

Phetchaburi Rajabhat University provides a variety of food outlets and dining centers to serve students, staff, and the public. The initiative emphasizes access to clean, safe, nutritious, and affordable food for people of all income levels.

To ensure fairness and accessibility, Phetchaburi Rajabhat University has established food price control measures across all dining areas. Meals at the university's food center start at 30 Baht, while those at Centennial Kitchen (The PBRU Heritage) and the Phetchaburi International Culinary School start at 50 Baht.

The university also promotes healthy dietary choices, offering vegetarian menus for health-conscious consumers and special dietary options for individuals with food allergies. These efforts aim to ensure that all members of the university community can access safe, healthy, and affordable meals every day.

“ ศูนย์เรียนรู้การเกษตรตามปรัชญาเศรษฐกิจพอเพียง ”



2.3.5 Staff hunger interventions

Phetchaburi Rajabhat University prioritizes staff well-being by providing adequate food and beverage facilities that ensure accessible, safe, and affordable nutrition for all employees. The main services include:

1. Main Cafeteria (2nd Floor):

Featuring 12 food and beverage outlets, offering a variety of affordable daily meals to meet staff needs.



2. University Dining Facilities:

Two main dining venues provide quality meals with seasonal menus at reasonable prices:

- Centennial Kitchen (The PBRU Heritage)
- Phetchaburi International Culinary School



3. Convenience Store (7-Eleven):

Offering a wide range of ready-to-eat meals and essential consumer products for staff convenience.



4. "Kanod Market":

Operating every Tuesday to Thursday, this market offers affordable food and household products for staff and the general public.



5. Sufficiency Economy Agricultural Learning Center:

Serving as a source of safe food production, including vegetables, fruits, mushrooms, eggs, poultry, pigs, goats, cattle, fish, and shrimp. These products are processed and sold to staff and community members to enhance food security and promote sustainable agriculture.



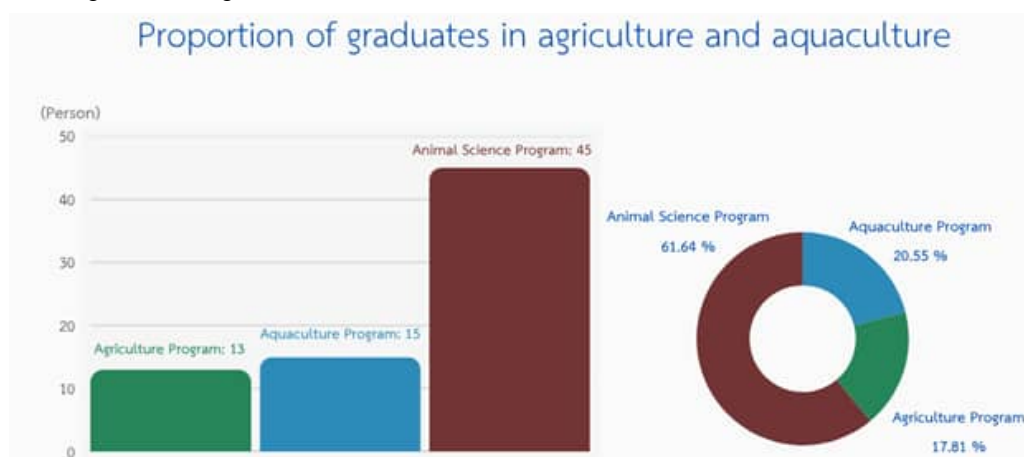
All facilities are designed to ensure inclusive access, quality, and fair pricing, contributing to the well-being of both staff and students while reducing inequality in food accessibility across the university.

2.4 Proportion of graduates in agriculture and aquaculture including sustainability aspects

2.4.1 Proportion of graduates in agriculture and aquaculture

In the academic year 2024, Phetchaburi Rajabhat University offered a total of 55 academic programmes, with 1,160 graduates across all disciplines. Among them, 73 graduates completed programmes in agriculture and aquaculture, consisting of:

- Agriculture Program: 13 graduates
- Aquaculture Program: 15 graduates
- Animal Science Program: 45 graduates



This represents 5.01% of the total number of graduates, highlighting Phetchaburi Rajabhat University's vital role in continuously producing skilled graduates in the field of agriculture to support the development of Thailand's agricultural sector and grassroots economy in alignment with sustainable development goals.

2.5 National hunger

2.5.1 Access to food security knowledge

Phetchaburi Rajabhat University promotes knowledge and innovation related to food security, sustainable agriculture, and nutrition through academic courses, research, and community training programmes that contribute to improving national food systems.

Students in the Applied Food and Nutrition Program designed healthy menus for individuals with food allergies as part of their coursework in Food Safety and Sanitation. This activity aimed to raise awareness of food safety and inclusive nutrition by developing alternative ingredients for individuals allergic to common food groups, including:

1. Gluten-containing grains
2. Shellfish and crustaceans
3. Eggs and egg products
4. Fish and fish products
5. Peanuts and peanut products
6. Soybeans and soy-based products
7. Milk and dairy products (including lactose)
8. Tree nuts and nut-based products
9. Sulphites

Students then applied this knowledge to create innovative, healthy menu options tailored to individuals with allergies or specific dietary needs, reflecting modern consumer interests in health-conscious and safe food choices.



The Faculty of Education organized a training course on “IoT for Organic Farming” to enhance farmers’ technological knowledge and skills in applying the Internet of Things (IoT) to organic agriculture systems. The program aimed to increase production efficiency, reduce costs, and promote environmentally friendly farming practices, contributing to modern and sustainable organic agriculture.



In addition, the Institute for Research and Promotion of Arts and Culture conducted a workshop on food safety and FDA product certification under the RAINs for Lower Central Provinces Food Valley Project (2024). The workshop provided participants with knowledge of FDA standards, production site preparation for inspections, food formula registration, and certified laboratory testing, ensuring that local food products meet national and international health and safety standards.



Phetchaburi Rajabhat University places great emphasis on developing professional skills in the field of food and promoting the sustainable growth of the service industry. The university aims to build a skilled workforce that meets the needs of both local and national labor markets.

To achieve this, the university organized training and assessment programs for the National Skill Standard Test in Thai Cuisine, Level 1, to enhance the culinary skills of students, alumni, and local residents. This initiative helps participants attain professional competency standards while increasing their employment opportunities and fostering stable and sustainable careers.



Through these initiatives, Phetchaburi Rajabhat University plays an essential role in promoting food safety awareness, sustainable production practices, and consumer health protection, thereby contributing to the advancement of national food security

2.5.2 Events for local farmers and food producers

Phetchaburi Rajabhat University actively engages with local communities through outreach programmes designed to enhance food security, sustainable resource use, and income generation. These initiatives focus on supporting local farmers, entrepreneurs, and food producers in Phetchaburi and Prachuap Khiri Khan Provinces by providing practical knowledge, innovation, and capacity building for sustainable livelihoods.

Key activities include:

1. Faculty of Agricultural Technology organized a workshop on constructing modular stingless bee houses under the project “Quality of Life and Grassroots Economic Development”. The initiative aimed to increase the productivity of aromatic coconut farmers and improve their income through integrated beekeeping for pollination and honey production.



2. Faculty of Education implemented a community-based development project in Rai Mai Pattana Subdistrict, Cha-am District, Phetchaburi Province. The project involved local surveys, stakeholder consultations, and community participation to design activities that support occupational development, product processing, and skill enhancement for sustainable income generation.



3. Faculty of Science and Technology conducted a culinary product development programme in Song Phi Nong Subdistrict, Kaeng Krachan District, featuring four local dishes—coconut chili paste, sour curry with fern and tilapia, fried chicken with fern, and mashed banana dessert—to promote culinary tourism and local entrepreneurship.



4. The Institute for Research and Promotion of Arts and Culture implemented a project titled "Sustainable Community Product Development for Online Platforms" in Ban Pak Khlong Community, Bang Saphan Noi District, and Phong Prasat Subdistrict, Bang Saphan District, Prachuap Khiri Khan Province. The initiative gathered community feedback to upgrade and commercialize local products, improving quality standards and expanding market access through online channels.



5. Faculty of Engineering and Industrial Technology held a public forum with the Khao Yoi Gourami Fish Processing Enterprise Group to explore renewable energy solutions for fish processing industries. The project assessed community needs and promoted technology-driven innovation to increase productivity and reduce costs, strengthening local economic sustainability.



6. Faculty of Management Science organized the project "Value-Added Community Products and Safe Agricultural Promotion in Tha Khoi Subdistrict, Tha Yang District, Phetchaburi Province." The project focused on developing new agricultural-based products, adding value through innovation, and improving both online and offline marketing channels, enabling community products to reach commercial markets sustainably.



7. The Phetchaburi International Culinary School hosted the event “Processing Phetchaburi Seafood Products” to promote creative food innovation using local raw materials, specifically cockles. Students and food entrepreneurs developed five new recipes—Japanese-style seaweed salad with cockles, cream of cockle soup, seaweed pasta with saffron sauce, clay pot rice with cockles, and lobster bisque with cockles—with feedback from private sector partners, shellfish farmers, and restaurant owners. The activity helped improve product quality and sustainability in the province’s marine aquaculture sector.



In addition, Phetchaburi Rajabhat University has implemented a policy to develop the Pong Salod area and nearby communities into a learning and technology transfer hub under the name “Integrated Agricultural Learning Center based on the King’s Philosophy.” The initiative aims to enhance the quality of life in the community, strengthen local knowledge, and promote sustainable agriculture through innovation and practical learning.

The center covers an area of 5.5 rai (approximately 0.88 hectares) and integrates renewable energy technologies into integrated farming systems. The site features 27 types of crops, including Hom Thong Banana, Phet Rose Apple, durian, papaya, and medicinal herbs. Knowledge and practices have been organized into five learning stations, as follows:

1. Water Management Station - Efficient water management using solar-powered smart irrigation systems.
2. Palm Husk Compost Station - Producing organic fertilizer from toddy palm husks to promote sustainable soil fertility.
3. Royal Fish Breeding Station - Expanding royally initiated fish species to promote sustainable aquaculture.
4. Plant Propagation Station - Demonstrating sustainable plant breeding and crop improvement techniques.
5. “Insects Must Flee” Station - Applying biological pest control methods to manage pests effectively and safely.



In addition to these learning bases, Phetchaburi Rajabhat University has established a community shop that sells food, beverages, and local products. This initiative empowers local residents to produce, process, and market their own products, thereby enhancing economic opportunities, income generation, and community self-reliance.

2.5.3 University access to local farmers and food producers

Phetchaburi Rajabhat University serves as a vital community resource, acting as a center for knowledge exchange, capacity building, and academic services for local farmers and food producers. The university provides continuous and sustainable support through both free and paid services, aiming to strengthen local agricultural systems and enhance community livelihoods.

1. Academic Services and Laboratory Facilities

The university offers comprehensive laboratory analysis and testing services, including water, wastewater, soil, fertilizer, and food quality analysis. These services are available to farmers, local food producers, organizations, and government agencies both within and outside the university.



Additionally, Phetchaburi Rajabhat University provides access to scientific instruments and research facilities, as well as training workshops and knowledge transfer activities focused on food processing, agricultural quality improvement, and product innovation for those interested in developing local agricultural enterprises.

2. Agricultural Development through Technology and Innovation

The university operates the Agritech and Innovation Center (AIC), which functions as a hub for agricultural technology services and innovation transfer. The center supports production efficiency, value addition, and quality standard enhancement of local agricultural products.

Moreover, the university implements a five-year initiative—Center for Agricultural Products Phetchaburi—aimed at developing agricultural machinery, agri-innovation, and mechanization systems, while also serving as a training and incubation center for Smart Farmers and Young Smart Farmers.

These initiatives are conducted in collaboration with the Department of Agriculture and the Phetchaburi Provincial Office of Agriculture and Cooperatives, ensuring the integration of academic expertise, technology, and practical applications to drive sustainable agricultural development in the region.



3. Promotion of Well-being and Quality of Life at the Grassroots Level

Phetchaburi Rajabhat University, in collaboration with the Thai Health Promotion Foundation (ThaiHealth), established the Node for Small-Scale Area Development Projects (NODE) to enhance community well-being and quality of life across 30 local areas in Phetchaburi Province. The initiative focuses on the following key areas:

- Promoting household cultivation and consumption of pesticide-free vegetables
- Elderly health promotion and active aging programs
- Reducing risk factors for non-communicable diseases (NCDs)
- Improving students' nutrition and fruit-vegetable consumption
- Community waste management and environmental sanitation
- Reducing or eliminating alcohol and tobacco consumption
- Managing high-risk areas to prevent community accidents



4. Conservation and Development of Local Cuisine

The university, in collaboration with local cultural networks, organized the event "100 Dishes, Temple Fair, 100 Years of Phetchaburi Rajabhat University", to promote local culinary heritage and cultural identity. The event positioned the university as a knowledge hub for local gastronomy, featuring research, documentation, and training workshops for local cooks and community food entrepreneurs.



These efforts aim to preserve and develop traditional food culture sustainably, while also supporting creative agricultural product development to enhance competitiveness and commercial potential for community enterprises.

5. Promoting Sustainable Community Economy

Phetchaburi Rajabhat University strives to create sustainable development opportunities for local farmers by:

- Developing reliable and sustainable agricultural markets
- Building provincial agricultural product brands to strengthen local identity
- Promoting agrotourism across all districts in Phetchaburi Province to generate income and improve community well-being



2.5.4 Sustainable food purchases

Phetchaburi Rajabhat University has established a clear vision to serve as a center for knowledge and innovation in food security and sustainable local development.

The university's vision statement declares:

"By 2027, Phetchaburi Rajabhat University will be a leading university in food, tourism, and health sciences – operating as a digital university that integrates multidisciplinary knowledge to promote sustainable local development."

Phetchaburi Rajabhat University is committed to developing specialized graduates and professionals in the fields of food, tourism, and health sciences, integrating multidisciplinary knowledge to improve quality of life and drive a sustainable grassroots economy.

Drawing upon Phetchaburi's rich biodiversity and cultural heritage as intellectual capital, the university promotes innovation and value creation throughout the agricultural and food value chain—from production to processing to distribution—in alignment with Thailand's Five-Curve Industries Policy.

The university's development approach follows the principle of "From Grassroots to Innovation", focusing on capacity building, technological advancement, and community-based innovation across key sectors:

1. Agriculture: Development of improved plant and animal breeds; promotion of safe agriculture, precision farming, and smart farming to enhance production efficiency while minimizing environmental impact.



2. Food: Research and development of local foods, processed foods, functional foods, and future foods to add economic value and strengthen national food security.



Through these efforts, Phetchaburi Rajabhat University collaborates closely with local communities to develop local products, generate income, and empower rural economies. The university's initiatives foster food sustainability, enhance the resilience of local farmers, and promote long-term community well-being and self-reliance.



3 GOOD HEALTH AND WELL-BEING



3.2 Number graduating in health professions

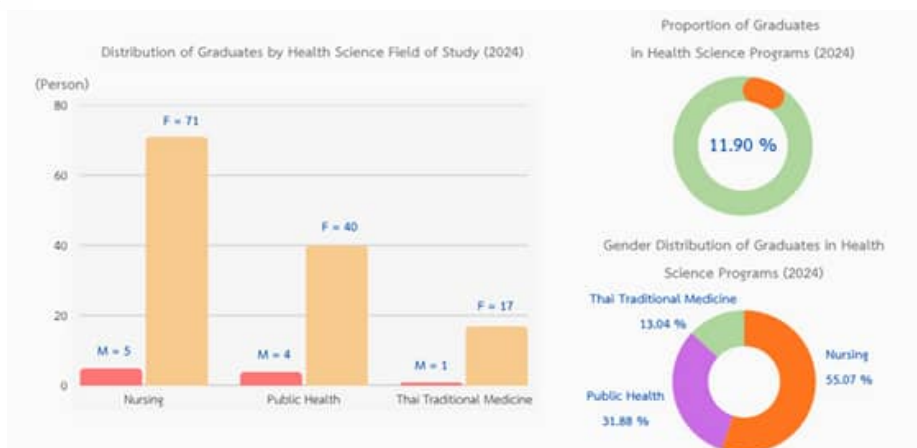


3.2.1 Proportion of graduates in health professions

In the academic year 2024, Phetchaburi Rajabhat University offered a total of 59 degree programmes, with 1,160 graduates across all disciplines. Among these, 138 graduates completed programmes in the Health Sciences, accounting for 11.90% of all graduates.

The details of graduates in Health Science Programmes by field of study are shown below:

Field of Study	Male graduate (Person)	Female graduate (Person)	Total (Person)	Percentage
Nursing	5	71	76	55.07
Public Health	4	40	44	31.88
Thai Traditional Medicine	1	17	18	13.04
Total (Person)	10	128	138	100.00



The majority of graduates in the Health Science Programmes were female, totaling 128 persons (92.75%). This reflects Phetchaburi Rajabhat University's success in promoting gender equality and empowering women in health-related professions fields that play a crucial role in social and community development in the long term.

In addition, the university's health science curricula emphasize practical learning, community engagement, and the development of holistic health competencies. These approaches ensure that graduates not only possess professional expertise but also a strong sense of social responsibility and volunteer spirit, enabling them to contribute effectively to public health and community well-being.

3.3 Collaborations and health services

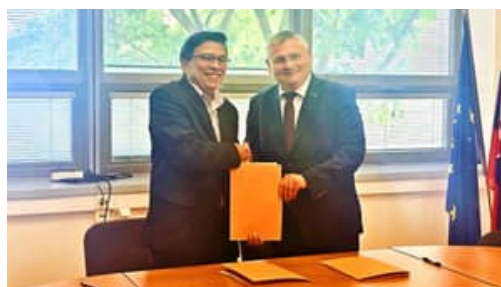
3.3.1 Current collaborations with health institutions

Phetchaburi Rajabhat University recognizes the importance of promoting public health and improving the quality of life of people. The university has therefore established collaborations and provided health-related services to communities at the international, national, and local levels, aiming to enhance health outcomes and foster a sustainable well-being society. In the academic year 2024, Phetchaburi Rajabhat University implemented several key projects and activities to strengthen healthcare services and public health cooperation.

Global cooperation

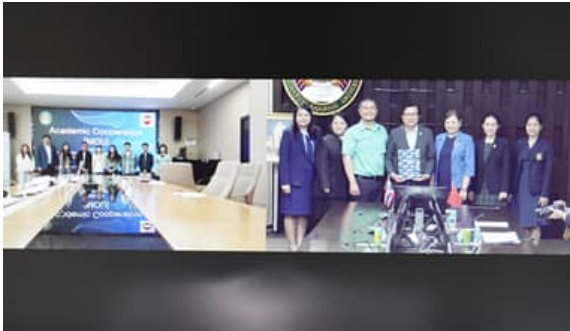
1. Memorandum of Understanding (MOU) between Phetchaburi Rajabhat University and the Slovak University of Technology in Bratislava, Slovakia

The Memorandum of Understanding aims to promote the development of academic knowledge, foster research collaboration, and enhance academic exchange between the two institutions in areas related to the Faculty of Nursing and Health Sciences. This cooperation represents an important step toward establishing a sustainable international academic collaboration network.



2. Memorandum of Understanding (MOU) between Phetchaburi Rajabhat University and Yunnan Technology and Business University, People's Republic of China

This collaboration focuses on the development and advancement of academic qualifications for lecturers and staff at the graduate level (Master's and Doctoral degrees), particularly in disciplines related to the Faculty of Nursing and Health Sciences. It also aims to strengthen academic capacity, research potential, and the establishment of international academic networks, thereby enhancing opportunities for access to global knowledge and resources.



3. International Conference on "Simulation Evolved: Integrating Immersive Tech & Foundational Skills for Healthcare's Next Leap"

The conference was organized as part of the Visiting Professor Program (2nd Edition) and the SIRCOP International Annual Conference, alongside the MOU Signing Ceremony between the Faculty of Nursing and Health Sciences, Phetchaburi Rajabhat University, and the College of Nursing and Allied Health, St. Paul University Manila. The collaboration aims to strengthen international academic and research partnerships in health sciences.

The conference served as a global platform for knowledge exchange and professional dialogue to advance the quality of health education. Distinguished speakers from leading international universities included:

- Dr. Pinthusorn Pattayakorn, California State University, San Bernardino, USA
- Dr. Suzan Kardong-Edgren, MGH Institute of Health Professions, USA
- Dr. Rosalind Siah Chiew Jiat, National University of Singapore

This international forum provided opportunities for sharing perspectives, fostering academic collaboration, and elevating health education through innovation and experiential learning. Key sessions covered topics such as *"Driving the Future: Elevating Global Nursing Education through Transformative Simulation"* and *"Writing for Publication: Getting Your Simulation Work Published."*



National collaboration

The Faculty of Nursing and Health Sciences, Phetchaburi Rajabhat University, signed a Memorandum of Understanding (MOU) with the Faculty of Nursing, Burapha University to jointly enhance the quality of nursing education, research, and academic services. The collaboration aims to elevate professional nursing standards and improve the overall health and well-being of people at the national level.



Local collaboration

1. Establishment of the “Warm Community Health Care and Promotion Center”

The Faculty of Nursing and Health Sciences, in collaboration with local administrative organizations and Subdistrict Health Promoting Hospitals, established the “Warm Community Health Care and Promotion Center” to provide comprehensive health services to residents of Nong Sano Subdistrict, Mueang Phetchaburi District. This initiative is part of the project titled “Enhancing Quality of Life and Strengthening the Grassroots Economy through Health Innovation.”

The center provides integrated health care services for all age groups, serves as a practical training site for nursing students, and functions as a hub for community health research and innovation development, thereby promoting sustainable well-being and community empowerment.



2. Workshop on “Enhancing the Capacity of Child and Elderly Caregivers”

The Faculty of Nursing and Health Sciences, Phetchaburi Rajabhat University, in collaboration with Village Health Volunteers (VHVs) of Ton Mamuang Subdistrict, organized a workshop aimed at strengthening the knowledge and practical skills of caregivers responsible for children and the elderly.

The training covered essential caregiving techniques such as urinary catheter insertion, nasogastric feeding, wound care, sponging to reduce fever, and child developmental assessment using the DSPM tool (Developmental Surveillance and Promotion Manual).

The program sought to promote health and improve the quality of life for individuals across all age groups, while empowering caregivers to provide safe, effective, and compassionate care within their communities.



3.3.2 Health outreach programmes

Phetchaburi Rajabhat University actively promotes public health and community well-being through a wide range of outreach programs, workshops, and collaborative initiatives. These programs aim to strengthen local health systems, reduce health disparities, and foster sustainable community development.

1. Local communities

Phetchaburi Rajabhat University places great importance on promoting health and well-being for people of all ages, particularly within local communities, underprivileged groups, and migrant workers. The university has implemented community health service projects, training workshops, and knowledge transfer activities to strengthen community capacity and support sustainable health development.



1.1 “Social Engineer” Project, Na Wung Subdistrict, Phetchaburi Province

The Faculty of Nursing and Health Sciences implemented the “Social Engineer Project” in Na Wung Subdistrict to develop community product business models and organize health information feedback activities through the “Community Development Timeline” tool. Sub-activities under this project included:

- Development of a herbal balm business model
- Development of a Kalamae (traditional Thai caramel candy) business model
- Development of a Khao Krieb Waow (traditional rice cracker) business model

These initiatives enhanced the value of local products while empowering students to become “thinkers, communicators, coordinators, and innovators for the community.” The project integrated health science knowledge with local development, serving as a model for academic collaboration that promotes community well-being and sustainable local economic growth.



1.2 “From Local Roots to Global Impact (NPT-PBRU)” Project

The Faculty of Nursing and Health Sciences organized the “From Local Roots to Global Impact (NPT-PBRU)” project to promote health and well-being for people of all ages through the development of the NPT-PBRU Learning Center. The project featured a series of activities, including:

- A training workshop on phytopharmacy and Thai traditional medicine, utilizing local herbal resources and identity herbs from the Pong Salod Forest;
- Extraction of active compounds from aloe vera and the development of herbal products such as soaps, shampoos, lotions, and Plai (Zingiber cassumunar) balms.

More than 100 participants took part in this initiative, including local government executives from four subdistricts, community members, Village Health Volunteers (VHVs), nursing students, and students from Rovuma University, Republic of Mozambique.

This project reflects the university’s commitment to integrating local wisdom with global collaboration, while advancing community health promotion and sustainable knowledge exchange at both local and international levels.



1.3 "First Aid Contest"

The Faculty of Nursing and Health Sciences organized the "First Aid Contest", an inter-university competition aimed at promoting and sharing nursing and health science knowledge. A total of 22 teams from various institutions nationwide participated in the event, providing students with opportunities to enhance their first aid skills and apply practical knowledge in real-life scenarios.



1.4 Community Wellness and Health Promotion Center

The Faculty of Nursing and Health Sciences, Phetchaburi Rajabhat University, established the Warm Community Health Promotion and Care Center to provide accessible and holistic healthcare services for students, university personnel, and local residents. The center focuses on health promotion, disease prevention, and primary healthcare for individuals across all age groups. The key services offered include:

- Health consultation and primary medical care
- Wound dressing and chronic wound management
- Family planning and midwifery services
- Health promotion and disease prevention programs

This initiative reflects the university's commitment to advancing community well-being through inclusive, preventive, and sustainable healthcare practices.

1.5 Thai Traditional Medicine Clinic

The Thai Traditional Medicine Clinic, operated by the Faculty of Nursing and Health Sciences, Phetchaburi Rajabhat University, provides holistic healthcare services under the supervision of certified Thai traditional medicine specialists. The clinic offers the following services:

- Traditional Thai massage for health and relaxation
- Application of herbal compresses, inhaled herbal remedies, balms, and massage oils

All treatments are administered and supervised by experienced Thai traditional medicine practitioners to ensure safety, efficacy, and adherence to authentic therapeutic principles.



1.6 “Simple Fitness for Seniors – Stay Active Every Day” Workshop

The Faculty of Education, Phetchaburi Rajabhat University, organized a community service activity to promote the well-being of local residents, particularly the elderly, through a workshop titled “Simple Fitness for Seniors – Stay Active Every Day.”

The workshop focused on proper and age-appropriate exercise techniques to strengthen both physical and mental health, reduce the risk of non-communicable diseases (NCDs), and improve the overall quality of life for the elderly in the local community.



2. Disadvantaged people

The Faculty of Nursing and Health Sciences, Phetchaburi Rajabhat University, organized the project “Holistic Elderly Quality of Life Development and Integrated Local Economic Empowerment toward Commercial Expansion” in Sam Krathai Subdistrict, Prachuap Khiri Khan Province, under the theme “Age Well Boost: Empowering the Triple-All for an Aging Society.” The project aimed to:

- Promote health and prevent diseases among the elderly;
- Preserve and transfer local health wisdom;
- Conduct skill development workshops on traditional woven handicrafts with distinctive local patterns to generate income.

The initiative was carried out in collaboration with multiple local partners, including the Sam Krathai Subdistrict Administrative Organization, Ban Don Klang Health Promoting Hospital, Ban Don Klang School, Tharnthip Elderly Club, and the Prachuap Khiri Khan Provincial Office of Social Development and Human Security.



3. Refugee/immigrant communities

The Faculty of Nursing and Health Sciences, Phetchaburi Rajabhat University, in collaboration with the Nurses' Association of Thailand, organized the activity "Smart Service, Smart Emergency Aid" under the project "In Honor of Her Royal Highness the Princess Mother's 125th Birthday - 125 Border Patrol Police Schools." The objectives of this initiative were to:

- Provide training on Basic Life Support (BLS) techniques;
- Enhance survival rates in emergency situations;
- Instill a sense of compassion and public responsibility in young students.

The activity included hands-on practice sessions in emergency assessment, cardiopulmonary resuscitation (CPR), and the use of automated external defibrillators (AEDs).

A total of 120 primary school students (Grades 4-6) from Ban Khao Chao Border Patrol Police School and Ban Phraek Takroh Border Patrol Police School participated in the training.

This outreach program played a vital role in building life-saving skills, promoting safety awareness, and empowering children in remote and border communities many of whom belong to migrant and underprivileged families to respond effectively during emergency situations.



3.3.3 Shared sports facilities

Phetchaburi Rajabhat University places great emphasis on promoting both physical and mental well-being among its staff, students, and surrounding communities. The university provides equal access to its sports and recreational facilities as shared spaces that encourage exercise, social interaction, and overall health promotion. The Sports and Recreation Center serves as the main unit responsible for maintaining and managing all sports facilities to ensure they are safe, inclusive, and ready for use. These facilities are open to:

- University staff and students
- External organizations, both public and private
- The general public in Phetchaburi Province and nearby areas

The university offers a wide range of indoor and outdoor exercise areas equipped with standard sports equipment and amenities, including:

- “Chulanon Stadium” (A multipurpose standard sports complex used for university-level and provincial-level sports competitions.)



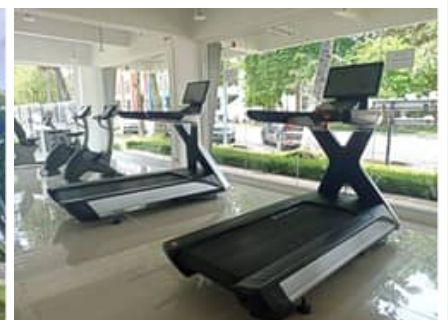
- Standard Swimming Pool (Used for teaching, competitive sports, and health-promoting exercise.)



- Gymnasiums 1 and 2 (Indoor facilities for sports such as basketball, badminton, volleyball, and futsal.)
- Indoor and Outdoor Futsal Courts (Open for team training and recreational matches.)
- Beach Volleyball Court (Designed to support outdoor and competitive play.)
- Petanque Court (Used for leisure and local competitions.)
- Multipurpose Sports Field (For various athletic and recreational activities.)
- Basketball Court (Available for training, practice, and competitions.)
- Boxing Ring (for martial arts and boxing practice.)
- Takraw Court (for the traditional Southeast Asian sport of Sepak Takraw.)



In addition, the university operates a fully equipped and modern Fitness Center, open Monday to Friday from 5:00 p.m. to 8:00 p.m. The center provides exercise equipment for cardio, strength training, and rehabilitation activities. Access is open equally to all users university personnel, students, and the general public reflecting the university's commitment to promoting inclusive, community-based health and fitness opportunities.



3.3.4 Sexual and reproductive health care services for students

Phetchaburi Rajabhat University places great importance on promoting sexual and reproductive health among students. The university aims to enhance knowledge, understanding, and appropriate behavior to ensure students' holistic well-being physically, mentally, and socially enabling them to take care of themselves and become positive role models within their communities.

1. Promoting Knowledge and Skills for Breast Self-Examination (BSE)

The Phet Thanyarak Club, under the Faculty of Nursing and Health Sciences, Phetchaburi Rajabhat University, organized the activity "Freshmen Care: Awareness and Prevention of Breast Cancer."

The objective was to raise awareness about breast cancer and promote the ability of young women to perform breast self-examinations (BSE) correctly. The activity included:

- A Breast Self-Examination Video Contest, designed to encourage creative learning through digital media.
- Educational sessions on breast cancer risk factors and prevention guidelines.
- Live demonstrations and practical workshops on proper and regular breast self-examination techniques.

This initiative enhanced students' understanding of personal health care, encouraged proactive health practices, and empowered them to share their knowledge with their families and communities. It aligns with the concept of "Proactive Health Promotion in Educational Institutions."



2. Promoting Reproductive Health and Safe Contraception

The Faculty of Humanities and Social Sciences, Phetchaburi Rajabhat University, organized an activity on "Reproductive Health, Contraception, and Prevention of Sexually Transmitted Infections (STIs)" aimed at enhancing students' understanding of the reproductive system, bodily functions, and the consequences of unsafe sexual behavior. The program also provided knowledge about proper and safe contraceptive methods. The main contents of the activity included:

- Fundamental knowledge of reproductive health
- Prevention of unplanned pregnancy
- Prevention of sexually transmitted infections (STIs)
- Promoting positive attitudes toward self-respect and respect for others'

This activity played an important role in fostering a positive understanding of sexual and reproductive health, equipping students with essential life skills for self-care, and encouraging responsible sexual behavior.



3.3.5 Mental health support for students

Phetchaburi Rajabhat University places great importance on promoting students' mental well-being through an accessible, friendly, and effective support system. The university aims to ensure that students are emotionally resilient, psychologically healthy, and well-prepared for learning and personal development.

1. PBRU Wellness Mind Clinic

The university established the PBRU Wellness Mind Clinic under the Student Development Division to provide mental health counseling and life guidance services for students and staff. The clinic is staffed by trained psychologists and certified counselors who offer both in-person and online consultations, helping students develop self-awareness, emotional understanding, and effective coping strategies for life challenges.

The clinic provides services through various channels, including:

- Individual appointments with psychologists for one-on-one counseling
- Online consultations through the Facebook page "PBRU Wellness Mind Clinic"
- Group activities and workshops focused on emotional development and life skills enhancement

This initiative demonstrates the university's commitment to fostering a supportive learning environment that promotes holistic well-being and empowers students to thrive both academically and personally



The PBRU Wellness Mind Clinic received the "Outstanding University Network for Student Mental Health Care Award 2024" from the Department of Mental Health, Ministry of Public Health, in recognition of its excellence in providing mental health support services for university students.

The award was presented during the National Seminar on Mental Health Operations and Knowledge Exchange: Towards Excellence in Mental Health within the Primary Health System, highlighting the university's commitment to promoting comprehensive and sustainable mental health care for its students.



2. "Mental Health of PBRU: Building Hope and Strength Together" Project

The Student Development Division organized the project "Mental Health of PBRU: Building Hope and Strength Together" under the Young Counselor (YC) Program to enhance students' understanding of mental health and equip them with the basic counseling skills needed to support their peers.

The project activities included:

1. Training on the current situation and importance of mental health in modern society
2. Workshops on stress management techniques and fostering positive thinking
3. Skill development sessions on empathic listening and appropriate counseling approaches
4. Interactive learning stations covering four key areas:
 - Personality Dimensions
 - Sources of Encouragement
 - Coloring for Mindfulness
 - Drug Awareness and Prevention

Over 100 student leaders from eight faculties participated in the program. Participants gained knowledge and practical skills to provide emotional support and peer counseling effectively, contributing to a caring and mentally healthy campus community.



3.3.6 Smoke - free policy

Phetchaburi Rajabhat University recognizes the harmful effects of smoking and electronic cigarettes on the health of students, staff, and the wider community. To promote a safe and healthy environment, the university has implemented a comprehensive "Smoke-Free University Policy", reinforcing its commitment to creating a supportive and wellness-oriented campus.

1. Smoke-Free Campaigns and Activities

The university organized various activities under the concept "Doing Good with Heart: PBRU Against E-Cigarettes on Campus", as part of the broader initiative "Healthy PBRU: Moving Toward a Well-Being Society."

The campaign's objectives were to:

- Raise awareness about the dangers of smoking and electronic cigarettes.
- Encourage students and staff to recognize the impact of tobacco use on health and the environment.
- Instill a sense of personal responsibility and commitment to a healthy, smoke-free lifestyle.

These activities were conducted in collaboration with the Phetchaburi Provincial Public Health Office and the Smoke-Free University Network, aiming to establish smoke-free zones and promote Phetchaburi Rajabhat University as a Healthy University.



3.3.7 Mental health support for staff

Phetchaburi Rajabhat University places great importance on promoting the mental health and overall well-being of all staff members. The university aims to foster a positive and supportive working environment that enhances psychological resilience, encourages continuous personal and professional growth, and cultivates an empathetic and caring organizational culture.

1. Advisor Seminar: “Empowerment Hub – Counseling for Mental Strength”

The Student Development Division organized a seminar for academic advisors titled “Empowerment Hub: Counseling for Mental Strength”, with the objective of enhancing advisors’ knowledge and counseling skills. The program aimed to equip faculty members with the ability to provide emotional support and effective guidance to students, thereby strengthening the advisor-student relationship.

The seminar covered key topics such as:

- Empowerment and positive psychology to enhance motivation and well-being among advisors.
- Psychological counseling techniques and positive communication skills for effective student support.
- Stress management strategies and appropriate methods for assisting students facing personal or academic challenges.

This training empowered academic advisors to serve as a vital source of encouragement and emotional support for students, helping them adjust to university life, manage stress, and foster happiness in their learning journey.



2. PBRU Wellness Mind Clinic

Phetchaburi Rajabhat University has established the PBRU Wellness Mind Clinic under the supervision of the Student Development Division to provide comprehensive mental health and life counseling services for both students and staff.

The clinic offers counseling sessions conducted by trained psychologists and certified mental health professionals, available in both face-to-face and online formats, ensuring that all members of the university community can conveniently and confidentially access mental health support.

In recognition of its outstanding performance, the PBRU Wellness Mind Clinic received the "Outstanding University Mental Health Network Award 2024" from the Department of Mental Health, Ministry of Public Health, for its excellence in promoting mental well-being within higher education institutions. This award underscores the university's strong commitment to developing a sustainable and inclusive mental health care system that supports emotional wellness for all staff and students.





4 QUALITY EDUCATION





4.2 Proportion of graduates with teaching qualification



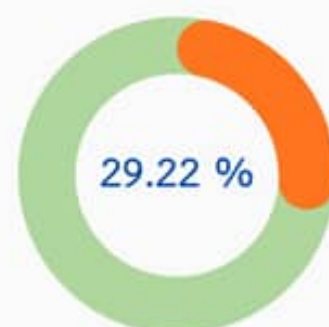
4.2.1 Proportion of graduates with relevant qualification for teaching

Phetchaburi Rajabhat University offers a total of 59 undergraduate programmes, of which 16 are in the field of education. In the academic year 2024, a total of 339 graduates obtained degrees with teaching qualifications, meeting all requirements set by the Teachers' Council of Thailand for professional teaching licensure in basic education.

When compared to the total of 1,160 graduates, those with teaching-related qualifications account for 29.22% of all graduates. This reflects the university's strong commitment to producing qualified and professional educators to meet the needs of the national education system and contribute to sustainable educational development.



Number of graduates from
education programmes





4.3 Lifelong learning measures

4.3.1 Public resources (lifelong learning)

Phetchaburi Rajabhat University (PBRU) promotes lifelong learning by providing equitable access to education for people of all ages through public learning resources and community-based learning activities. The university's initiatives aim to enhance local knowledge, strengthen skills, and promote inclusive, sustainable lifelong learning opportunities for all.

1. Free Courses/Short Course

1.1 Herbal Soap Community Enterprise Development Programme

The Faculty of Management Science organized training sessions for members of the Herbal and Wellness Tourism Community Enterprise, Tha Raeng Sub-district, Ban Laem District, Phetchaburi Province.

Activities were conducted in three phases:

1. Knowledge sharing and hands-on production of herbal liquid soap.
2. Online marketing training and provision of livestreaming equipment.
3. Basic accounting and cost management training.

This initiative integrated marketing, business, and production knowledge to enhance community entrepreneurship and promote sustainable local development.



1.2 Tourism Capacity Building for Ban Bang Ket Herbal Community Enterprise

The Faculty of Management Science organized training activities to strengthen community-based tourism capacity. The key activities included:

- Recording income-expense transactions.
- Practicing digital photography and media production for tourism promotion.
- Conducting live-streaming sales for local products and services.
- Improving landscape design to create attractive photo spots for tourists.

These initiatives demonstrate PBRU's commitment to fostering community development through academic knowledge transfer and innovation integration, following the principles of the value-based economy and creative economy.





1.3 Seminar on Main Distribution Boards (MDB) and Electrical Switchboards

The Vocational Training and Skill Testing Centre, in collaboration with private sector partners, organized a seminar on the importance of Main Distribution Boards (MDB) in electrical systems. The seminar aimed to promote lifelong learning and enhance participants' professional competencies through upskilling and reskilling opportunities.



1.4 Short Courses Open to the Public

The university regularly offers short courses open to all citizens, such as "Simple Exercise for the Elderly: Fit for Every Day", which integrates community innovation and social engineering to promote active ageing and healthy lifestyles.

1.5 Social Engineer and "From Local Roots to Global Impact" Projects

These university-community collaboration projects provide free training and development activities for local residents, encouraging participation in community innovation, sustainable agriculture, and local entrepreneurship.





2. Free Access to Online Resources

Phetchaburi Rajabhat University provides free and open access to a variety of digital and online learning resources to promote equitable and inclusive lifelong learning for all.

2.1 PBRU e-Learning Platform

The university's online learning centre offers a wide range of open-access educational media and online courses for the public. The platform supports self-paced learning and allows individuals to develop their skills and knowledge beyond formal education systems.

2.2 Digital Learning Materials and Knowledge Databases

The university disseminates video lectures, electronic books (e-books), academic articles, and digital knowledge bases through its official website and social media channels. These resources serve as open educational materials to support learning at all levels and encourage lifelong learning in the community.



3. Free Access to Campus Facilities and Equipment

Phetchaburi Rajabhat University provides free access to campus learning facilities and educational resources for the public, enabling community members to explore, study, and develop their skills in a supportive academic environment.

3.1 The Office of Academic Resources and Information Technology, Digital Centre, Language Development Centre, scientific laboratories, and Learning Space facilities are open for public use, allowing individuals to conduct research, self-study, and participate in informal education activities.

3.2 The university's sports fields and recreation centres are open to local communities for physical activities and wellness promotion.

3.3 The Warm Community Health and Wellness Centre provides free health consultations and basic healthcare services, supporting the well-being of students, staff, and nearby residents.





4. Community Learning Centers

Phetchaburi Rajabhat University has established several Community Learning and Academic Service Centres across Phetchaburi Province to enhance access to education and knowledge for all community members.

These centres serve as local knowledge hubs, offering training, workshops, and extension programmes that integrate university expertise with community needs.

The university also collaborates with local schools and community organizations to implement joint learning projects, promote inclusive education, and strengthen the foundation for lifelong learning in rural areas.



4.3.2 Public events (lifelong learning)

Phetchaburi Rajabhat University actively promotes lifelong learning through continuous public learning activities designed to engage youth, students, and the general public. These activities aim to foster an inclusive learning society where everyone has access to education and opportunities to develop their skills. The events cover a wide range of topics academic, vocational, cultural, and life skills enabling participants to apply acquired knowledge effectively in their daily lives.

1. "Open House 2025: Agriculture Innovation for the Future" – Faculty of Agricultural Technology

The Faculty of Agricultural Technology organized the "Open House 2025" event to disseminate agricultural knowledge and promote practical learning among students from four secondary schools in Phetchaburi Province – Ban Laem Wittaya School, Bang Chan Wittaya School, Wachiratham Sophit School, and Nong Chok Wittaya School.

The event featured:

- Academic exhibitions and student project showcases.
- Learning stations (hands-on practice areas) for real-world experience.
- Academic guidance and information sessions on higher education opportunities.

The objective was to inspire young learners and promote experiential learning through practical demonstrations and academic engagement. The exhibitions were presented by four academic programmes: Aquaculture, Animal Science, Agricultural Technology, and Food Science and Technology, emphasizing the integration of science, innovation, and sustainable agriculture.





2. “PBRU OPEN HOUSE: Rajabhat Phetchaburi Fair”

The Corporate Communications Division, in collaboration with the Office of Academic Promotion and Registration, organized the “PBRU Open House: Rajabhat Phetchaburi Fair” to publicize university programmes and provide opportunities for students and the public to explore learning experiences through practical activities.

Key components of the event included:

- Academic exhibitions from eight faculties and the College of Food Innovation and Service Industry.
- Hands-on demonstrations and interactive learning sessions.
- Career guidance and higher education counselling.

This initiative serves as a core mechanism for promoting lifelong learning, enabling participants from all backgrounds to access practical learning opportunities, gain career-related knowledge, and strengthen the relationship between the university and the community. Through such activities, Phetchaburi Rajabhat University continues to act as a regional hub for knowledge exchange and community engagement, fostering sustainable educational development.





4.3.3 Vocational training events (Lifelong Learning)

Phetchaburi Rajabhat University (PBRU) promotes lifelong learning for the public, youth, and students through vocational training programmes, skill certification, and hands-on workshops that integrate academic knowledge with practical experience.

These initiatives aim to enhance employability, improve workforce readiness, and support the sustainable development of professional skills that meet the needs of the labour market.

Key vocational training activities conducted in the academic year 2024 include the following:

1. “One Village, One Thai Chef” Project

The Phetchaburi International Culinary School, in collaboration with the Ministry of Higher Education, Science, Research and Innovation (MHESI), implemented the project “One Village, One Thai Chef” to promote local employment and elevate culinary standards in Thai communities.

The programme provided 150 hours of practical training covering 50 Thai dishes, led by professional chefs.

It offered Upskill and Reskill opportunities for local cooks and culinary practitioners, transforming them into qualified community chefs with professional standards. The initiative not only supported skill development but also encouraged the preservation of Thai culinary wisdom and created sustainable career pathways for participants in the food and hospitality industry.





2. Training and Skill Standard Testing: Electrical Wiring Technician (Level 1)

The Vocational Training and Skill Testing Centre at Phetchaburi Rajabhat University organized a training and certification programme for the Electrical Wiring Technician (Level 1) to certify the competency of students, alumni, and the general public.

This programme complies with the Ministry of Labour's regulations, which designate electrical installation as a high-risk occupation that must be performed only by qualified and certified individuals. Through both theoretical instruction and practical testing, participants gained recognized credentials that enhance employability and ensure safe, high-quality standards in the electrical workforce.



3. Workshop on "Solar Rooftop Installation"

The Faculty of Engineering and Industrial Technology, in collaboration with the Vocational Training and Skill Testing Centre, organized a hands-on Workshop on Solar Rooftop Installation to promote knowledge and skills in renewable energy systems.

Participants learned about the design, installation, and operation of solar rooftop systems through interactive demonstrations and field practice. This workshop provided students with practical experience in renewable energy technology, preparing them for future careers in the clean energy and sustainable industry sectors.





4.3.4 Education outreach activities beyond campus

Phetchaburi Rajabhat University (PBRU) has continuously implemented educational outreach and community development programmes beyond the university campus, focusing on academic services for youth, local communities, and the general public. These initiatives aim to transfer knowledge, develop practical skills, and enhance the quality of life of community members through participatory learning and engagement.

Working collaboratively with faculty members, local organizations, and community networks, the university conducts situational analyses, development planning, and integrated projects that respond directly to local needs.

These efforts reinforce PBRU's role as a regional learning hub and a driving force for sustainable development at both local and regional levels.

1. Science Camp Outreach Programme

The Faculty of Science and Technology organized a "Science Camp" for 415 primary school students from Wat Don Kai Tia School (Grade 1) to foster early interest in science and technology through active learning and hands-on experimentation.

The programme included eight interactive learning stations, jointly designed and operated by three academic departments, providing fun, experiential learning opportunities that encouraged curiosity, creativity, and problem-solving among young learners.

Through these engaging activities, students gained foundational scientific understanding and inspiration to pursue further education in science and technology fields, reflecting PBRU's mission to promote STEM education and lifelong learning in local communities.





2. Academic Service on Child and Youth Protection Law

The Law Program, under the Faculty of Humanities and Social Sciences, conducted an academic outreach activity titled “Legal Knowledge on Child and Youth Protection” for Grade 10-11 students at Benjamarachalai School, Phetchaburi Province.

The project aimed to provide students with accurate legal knowledge and to promote civic awareness of rights, responsibilities, and social ethics among young people.

Through interactive lectures and case-based discussions, participants learned about the Child Protection Act and related laws, fostering analytical thinking, social responsibility, and respect for the rule of law. This initiative reflects the university’s commitment to strengthening civic education and promoting youth empowerment through accessible legal literacy in the community.



3. Certificate Programme for Border Patrol Police Teachers (Generation 21)

The Faculty of Education, Phetchaburi Rajabhat University, implemented the Certificate Programme for Border Patrol Police Teachers (Generation 21) a seven-month training initiative designed to enhance the professional qualifications and teaching competencies of police officers serving as teachers (Por Thor 1 positions) in Border Patrol Police Schools across Phetchaburi and Prachuap Khiri Khan Provinces.

The programme focuses on developing participants’ pedagogical knowledge, instructional skills, and classroom management competencies, as well as promoting an understanding of learner-centered education appropriate to remote and rural contexts. It also emphasizes the teachers’ roles as community developers, empowering them to integrate educational knowledge into community improvement and local well-being.

This initiative plays a vital role in reducing educational inequality and enhancing the quality of education in border and underserved areas, reflecting Phetchaburi Rajabhat University’s mission to advance inclusive, equitable, and sustainable education for all.





4.3.5 Lifelong learning access policy

Phetchaburi Rajabhat University has established a strategic operational framework comprising six key pillars to enhance the quality of education and drive sustainable local development

1. Excellence in Food, Tourism, and Health Sciences

Phetchaburi Rajabhat University aims to strengthen and advance its academic programs in food, tourism, and health sciences, both at degree and short-course levels. The university promotes academic collaboration and knowledge exchange with domestic and international institutions to enhance professional competencies, support innovation-driven research, and ensure sustainable academic excellence.

3. Teacher Education and Professional Development

Phetchaburi Rajabhat University places strong emphasis on producing high-quality and innovative educators capable of integrating digital technologies and artificial intelligence (AI) into teaching and learning. To this end, the university established the AI Innovation and Research Center, designed to enhance digital literacy, pedagogical innovation, and research capacity among both pre-service and in-service teachers.

5. Local Development

Phetchaburi Rajabhat University collaborates with local administrative organizations to promote sustainable community development, the preservation of cultural heritage, and the revitalization of local arts and crafts, such as Phetchaburi stucco art and traditional Chatree theatre. Furthermore, the university integrates cultural tourism initiatives to generate local income and improve community well-being.

2. Graduate Development

The university is committed to producing practice-oriented graduates equipped with competencies that meet the evolving demands of the labor market. Flexible learning pathways such as the Credit Bank System are implemented to promote lifelong learning opportunities, while fostering entrepreneurial mindsets and creative career skills among students to prepare them for the future of work.

4. Research and Innovation Development

The university actively promotes research collaboration networks at both national and international levels to generate research with social and economic impact. It also supports the professional growth of researchers through capacity-building initiatives that raise research standards to meet global academic benchmarks.

6. Organizational Management and Governance

The university applies digital transformation strategies to enhance organizational efficiency and expand its information technology infrastructure. It is committed to becoming a Green University, integrating Big Data-driven management systems to strengthen institutional governance, sustainability, and environmental responsibility.





In addition, Phetchaburi Rajabhat University is dedicated to advancing academic excellence and developing high-level professional manpower through continuous enhancement of its curricula, learning processes, and organizational management systems.

The university focuses on promoting Reskilling and Upskilling to equip learners with competencies relevant to the digital era, while fostering a culture of Lifelong Learning accessible to individuals of all ages. The university provides flexible and diverse educational systems to ensure inclusive access to learning opportunities throughout life, including:

- Degree Programmes (Formal undergraduate and postgraduate academic programmes)
- Non-degree Programmes (Short courses and special training programmes)
- Credit Bank System (A system for credit accumulation and transfer)

These initiatives enable all learners to pursue education in a flexible, continuous, and inclusive manner.







บุคลากร Upskill

"การสื่อสารภาษาอังกฤษในการปฏิบัติงาน"









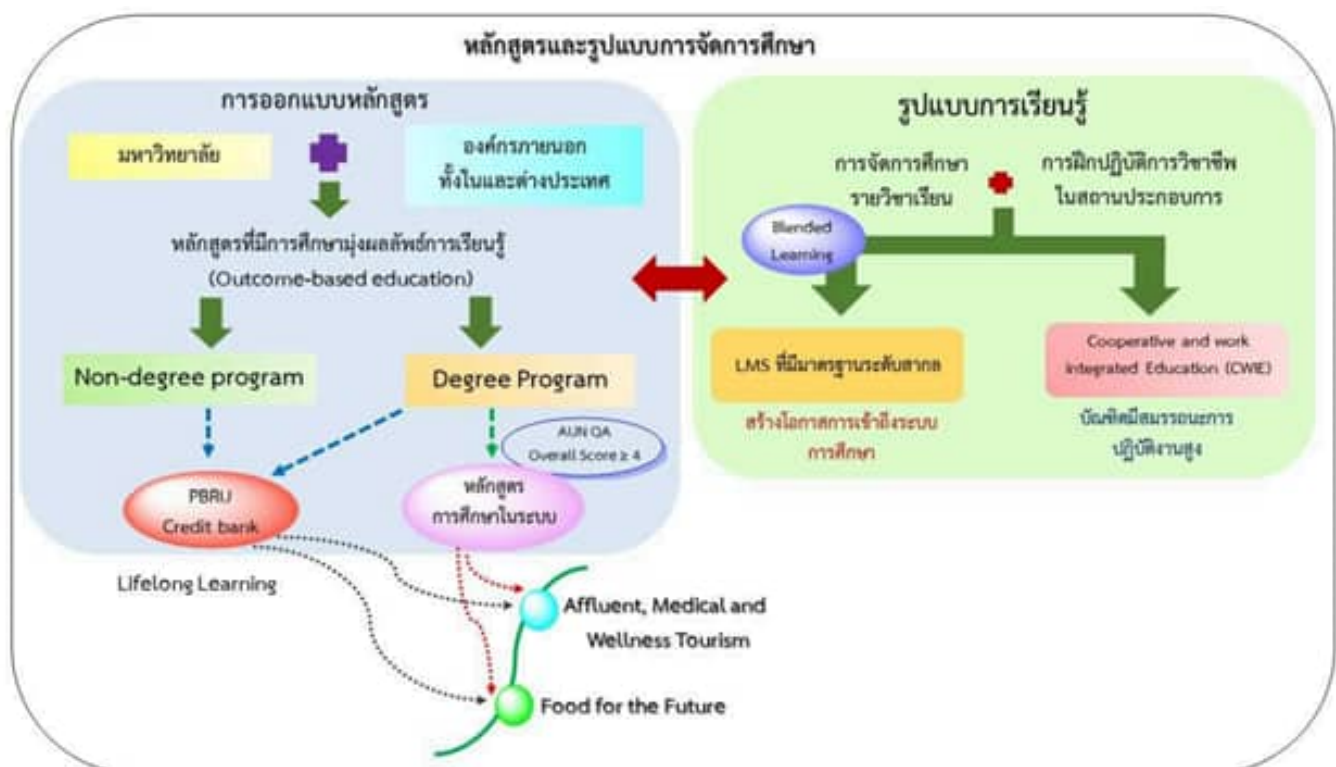

In terms of graduate and personnel development, Phetchaburi Rajabhat University continuously designs and enhances academic programs that respond to the needs of local, regional, and national development.

The university emphasizes the development of language proficiency, professional competence, and international standards, while fostering innovation-based entrepreneurship through community-driven research and grassroots economic development. These efforts aim to translate academic knowledge and innovation into tangible economic and social value.

Furthermore, the university has implemented a Blended Learning system supported by a certified Learning Management System (LMS) that enables students to learn “Anywhere, Anytime, and at Any Age.” It also prioritizes curriculum development in its key academic strengths, including:

- Food and Nutrition
- Tourism and Hospitality
- Health Sciences

These disciplines meet labor market demands at local, regional, and national levels while expanding equitable access to education and promoting lifelong learning for all.





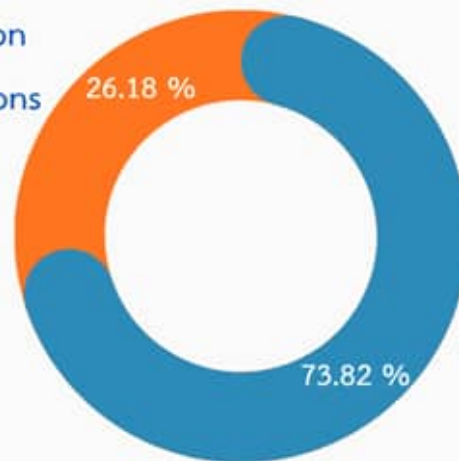
4.4 Proportion of first-generation students

4.4.1 Proportion of first - generation students

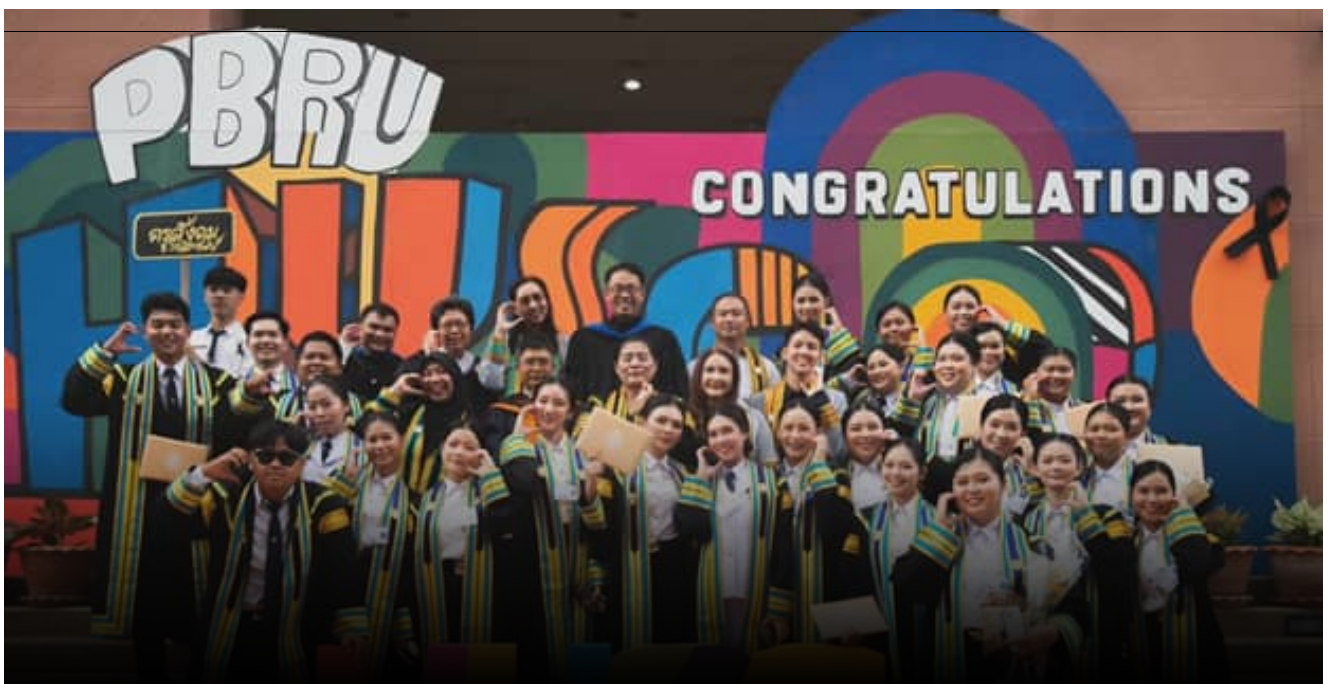
In the academic year 2024 Phetchaburi Rajabhat University had a total of 1,925 new undergraduate students. Among these, 1,421 students were identified as first-generation students, accounting for 73.82% of the total new student population. Meanwhile, 504 students were non-first-generation students, representing 26.18% of the total new undergraduate cohort.

First-generation students vs Non-first-generation students

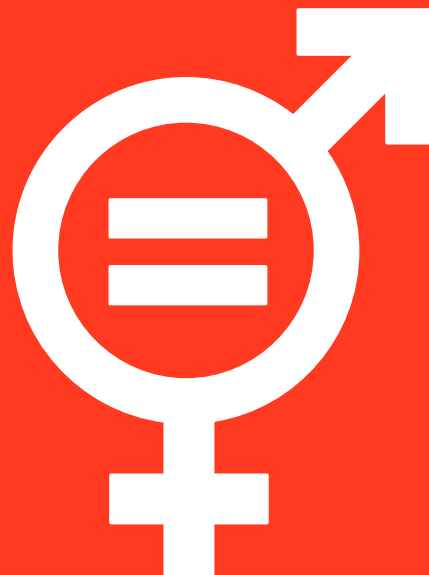
Non-first-generation
students: 504 persons



Number of first-generation
students: 1,421 persons



5 GENDER EQUALITY



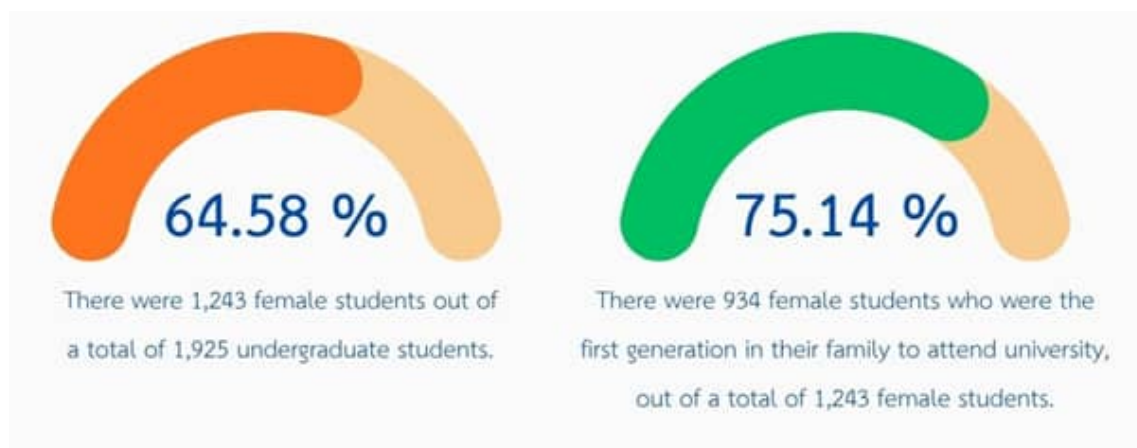


5.2 Proportion of first-generation female students



5.2.1 Proportion of women first - generation

In the academic year 2024, Phetchaburi Rajabhat University had a total of 1,925 newly enrolled undergraduate students, of whom 1,243 were female, accounting for 64.58% of all new students.



Among these female students, 934 were first-generation female students—that is, the first in their families to pursue higher education—representing 75.14% of all newly enrolled female students in the academic year 2024.

The significant proportion of first-generation female students accessing higher education demonstrates Phetchaburi Rajabhat University's pivotal role in expanding educational opportunities for women, particularly those from rural areas and economically disadvantaged families. This reflects the university's commitment to promoting gender equality and inclusive education

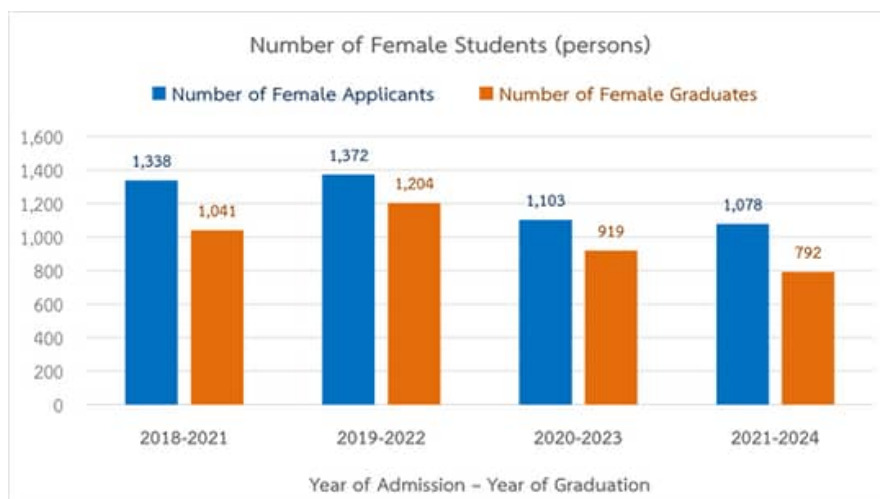
5.3 Student access measures

5.3.1 Tracking access measures

Phetchaburi Rajabhat University systematically monitors, collects, and evaluates data to measure and assess the enrolment and graduation rates of female students in each academic year. The Office of Academic Promotion and Registration is responsible for maintaining statistical records on student retention and graduation rates, serving as the main unit overseeing access and success metrics.

Tracking data from the academic years 2018 – 2021 indicated that a total of 4,891 female students were enrolled. During the academic years 2021–2024, a total of 3,956 female students successfully graduated, representing 80.88% of all enrolled female students.

This outcome reflects the continuity of education and the university's effectiveness in managing educational opportunities for female students, highlighting Phetchaburi Rajabhat University's commitment to enhancing gender equality and supporting women's access to higher education



5.3.2 Policy for women applications and entry

Phetchaburi Rajabhat University has implemented its Five-Year Strategic Plan (2022–2026), under which Strategic Goal 2 focuses on “Producing quality graduates who are work-ready and lifelong learners.” This strategic direction aims to enhance the quality of graduates by equipping them with the knowledge, skills, and attributes that align with societal changes and labor market demands.

Under this strategy, the university emphasizes equitable development of students' potential and ensures non-discrimination based on gender. It actively promotes equal access to education for female students and all groups, supporting their academic and professional skill development alongside moral, ethical, and civic responsibility education. This holistic approach prepares graduates to become responsible and contributing citizens in society.



To expand educational access, Phetchaburi Rajabhat University conducts outreach and educational guidance activities in secondary schools and local communities to promote academic programs and inspire youth, particularly female students in remote areas, to pursue higher education. These initiatives also support women and vulnerable groups in accessing education equitably and inclusively.

Moreover, the university has developed diverse admission pathways to accommodate different student categories, including those with disabilities. It established the Disability Student Services Center (DSS) to provide comprehensive support for students with disabilities—covering learning equipment, accessibility services, and educational counseling—to ensure that all students can access higher education on an equal basis.

This policy reflects Phetchaburi Rajabhat University's strong commitment to gender equality and fair access to education for all, particularly female students and those with special needs, contributing to the creation of an inclusive, equitable, and lifelong learning society that leaves no one behind



5.3.3 Women's access schemes

Phetchaburi Rajabhat University places strong emphasis on promoting gender equality and ensuring that women and people of all genders have equal access to education and skills development. The university has continuously implemented various projects and activities aimed at creating a safe, inclusive, and empowering learning environment that supports the holistic development of students in academic, professional, and personal dimensions.

In collaboration with the Ministry of Social Development and Human Security, the university established the Gender Equality Promotion Center, serving as a key mechanism to drive gender equality policies across all dimensions — including education, livelihood, and employment. The center's core mission is to raise awareness of human rights and gender diversity while working to reduce gender-based disparities within society.

The center organizes diverse activities such as:

1. LGBTQ+ contests to promote pride in gender diversity;
2. The establishment of the "Thanyarak Club", which serves as a safe space for learning and exchanging knowledge about women's rights and health care; and
3. The creation of a Gender Equality Counseling and Education Center, which provides psychological support, counseling, and accurate information on gender equality and human rights.





Furthermore, Phetchaburi Rajabhat University encourages its faculties to implement projects and activities that promote gender equality in various dimensions, such as:

1. Training and career counseling programs for female students to enhance entrepreneurial and vocational skills;
2. Creating inclusive spaces where students of all genders can equally express their talents and potential; and
3. Organizing contests to promote confidence and gender diversity recognition, such as the IT Ambassador Boy & Girl and IT Ambassador LGBTQ+ competitions.

All these initiatives demonstrate the university's strong commitment to fostering gender equality at all levels, creating a safe, inclusive, and gender-friendly learning environment for everyone. Phetchaburi Rajabhat University continues to stand as a model institution for promoting diversity, equality, and inclusion



5.3.4 Women's application in underrepresented subjects

Phetchaburi Rajabhat University implements an admission policy based on equality and equal educational opportunities, without setting gender-based quotas for admission in any faculty or academic program. All students are free to choose their fields of study according to their interests, without restrictions based on gender or social roles.

In the academic year 2024, the university had 1,243 newly enrolled female undergraduate students. Among them, 87 female students were enrolled in disciplines traditionally underrepresented by women 58 in the Faculty of Agricultural Technology and 29 in the Faculty of Engineering and Industrial Technology accounting for 7.0% of all newly enrolled female students.

The university continuously provides support and encouragement for female students in these underrepresented fields, promoting learning, research, and professional skill development. Special emphasis is placed on building confidence, leadership, and participation in both academic and social activities.



For example, female students from the Faculty of Agricultural Technology Student Association organized the project “Compilation of Plants in Thai Literature” at Anan School, Hua Hin District, Prachuap Khiri Khan Province, as part of their preparation to participate in the School Botanical Garden Project. This initiative also aimed to enhance the community’s quality of life through a “Social Engineering” process. The activity provided opportunities for female students to demonstrate professional competence, engage in hands-on learning, and foster responsibility, volunteerism, and positive attitudes toward careers where women are underrepresented.

These policies and initiatives reflect Phetchaburi Rajabhat University’s strong commitment to creating an equitable academic environment that empowers female students to pursue underrepresented disciplines with pride, while contributing to sustainable professional and social development



5.4 Proportion of senior female academics

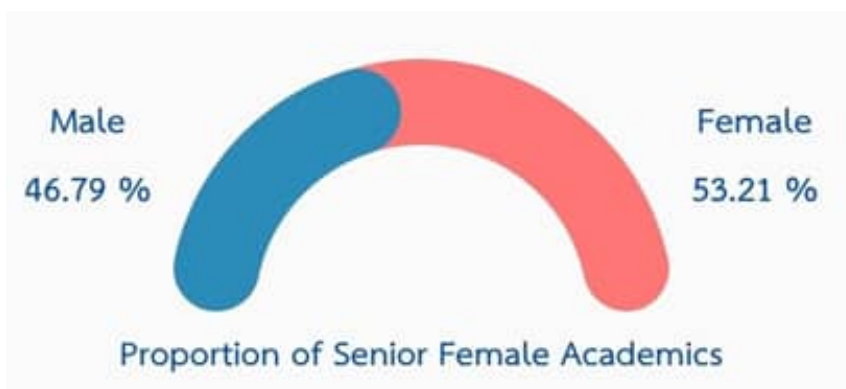
5.4.1 Proportion of senior female academics

Phetchaburi Rajabhat University places strong emphasis on promoting gender equality at all levels, particularly in academic and administrative leadership positions, which serve as key mechanisms for advancing educational policy, research, and sustainable local development.

In the academic year 2024, the university had a total of 742 personnel, comprising 292 males and 450 females across academic and supporting staff. Among these, there were:

1. 58 senior female academic staff, and
2. 51 senior male academic staff,

making a total of 109 senior academic staff, with female academics representing 53.21% of this group.





The university is committed to continuously developing the capacity of female academic staff through opportunities in teaching, research, and leadership development, ensuring gender balance within higher education institutions. This approach aims to strengthen the role of women in decision-making processes and promote sustainable gender equity in academic governance

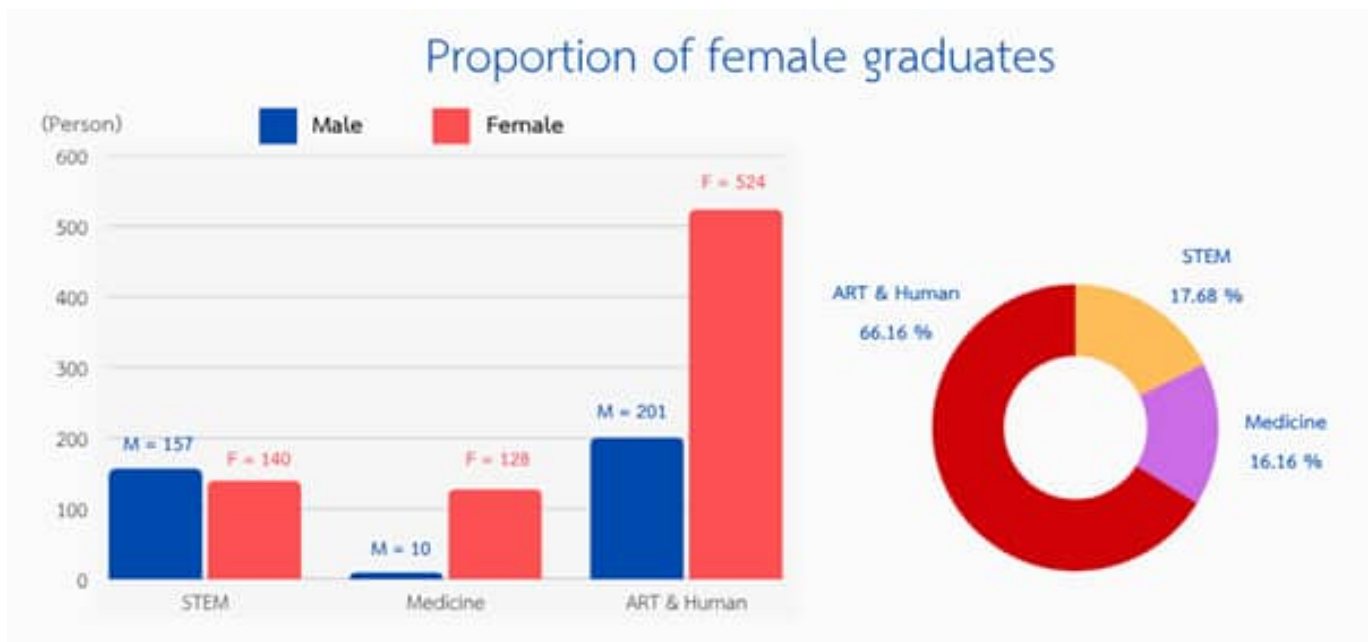
5.5 Proportion of women receiving degrees

5.5.1 Proportion of female degrees awarded

In the academic year 2024, Phetchaburi Rajabhat University awarded a total of 1,160 bachelor's degrees, comprising 792 female graduates and 368 male graduates. Female graduates accounted for 68.28% of all degree recipients.

When analyzed by faculty, the distribution of female graduates was as follows:

1. STEM - Total Graduates: 297; Female Graduates: 140 (17.68%)
2. Medicine and Health Sciences - Total Graduates: 138; Female Graduates: 128 (16.16%)
3. Arts, Humanities & Social Sciences - Total Graduates: 725; Female Graduates: 524 (66.16%)



Overall, the majority of graduates from Phetchaburi Rajabhat University were female, particularly in fields such as Nursing, Humanities, and Social Sciences. This reflects the university's success in expanding educational opportunities for women and its ongoing efforts to promote gender equality in higher education.

At the same time, the university recognizes that male students remain predominant in certain fields such as Engineering and Information Technology. Therefore, Phetchaburi Rajabhat University is implementing strategies to encourage greater female participation in these disciplines, aiming to achieve gender balance across all fields of study



5.6 Women's progress measures

5.6.1 Policy of non-discrimination against women

Phetchaburi Rajabhat University has established a clear policy of non-discrimination on the basis of gender, grounded in respect for human rights and equality for all individuals. This policy is embedded within the university's Strategic Plan for Academic Excellence and the Development of Specialized Human Resources, which emphasizes accessible and inclusive education for all regardless of gender, age, or social status.

The university ensures that all students have the freedom to choose their field of study according to their interests and abilities, without any form of restriction or bias. In addition, it promotes awareness of human rights, respect for human dignity, and appreciation of diversity among both staff and students.

Through these efforts, Phetchaburi Rajabhat University strives to foster an academic community that values equality and inclusion, ensuring that gender equity is upheld at every level of education





5.6.2 Non-discrimination policies for transgender

Phetchaburi Rajabhat University places strong emphasis on gender equality in all dimensions and actively promotes an environment where all staff and students—regardless of gender identity—can express themselves freely and appropriately. In particular, for students whose gender identity differs from their sex at birth (LGBTQ+), the university allows them to dress according to their gender identity in both daily life and official university activities. This policy reflects the university's commitment to respecting personal identity, human dignity, and individual freedom.

Moreover, the university organizes inclusive programs and activities that ensure equal participation for students of all genders, such as assigning leadership roles in events and student activities to LGBTQ+ individuals, thereby promoting visibility and representation.

In addition, Phetchaburi Rajabhat University has established the Center for Human Rights Studies and Coordination, under a Memorandum of Understanding (MoU) with the National Human Rights Commission of Thailand. This center serves as a hub for promoting knowledge, understanding, and respect for human rights through activities such as training youth networks and teacher leaders in local communities.

These policies and initiatives clearly demonstrate the university's strong commitment to fostering a safe, inclusive, and discrimination-free learning and working environment—one that celebrates diversity, promotes equality, and upholds human rights and gender inclusivity





5.3 Maternity policy 5.3 Maternity policy

Phetchaburi Rajabhat University places great importance on the well-being and quality of life of all staff members, regardless of gender, particularly concerning maternity and paternity rights. The university is committed to creating a family-friendly working environment and promoting gender equality in the workplace.

According to the Regulations on Employee Welfare of Phetchaburi Rajabhat University, 2021, the university provides comprehensive maternity and paternity benefits, including leave entitlements and financial support related to pregnancy and childbirth.

1. Female staff members are entitled to 90 days of maternity leave, comprising 45 days paid by the university and 45 days paid by the Social Security Office, in accordance with the Social Security Act of Thailand.

2. Male staff members are entitled to up to 15 working days of paternity leave to support their spouses during childbirth.

3. Employees who have contributed to the Social Security Fund for at least seven months within the 15 months preceding childbirth are eligible to receive a childbirth allowance of 15,000 Baht per child (for up to two children).

4. Additionally, the Phetchaburi Rajabhat University Personnel Club provides an extra 1,000 Baht per childbirth as supplementary welfare support.

The university's human resource management system ensures that maternity or paternity leave does not negatively affect career advancement, promotion, or other benefits. Moreover, the Warm Community Health Promotion and Care Center, under the Faculty of Nursing and Health Sciences, provides counseling and education on family planning and maternal health care to support a healthy balance between professional and family life.

This policy demonstrates Phetchaburi Rajabhat University's strong commitment to Gender Equality and Equal Opportunity in Employment and Family Life

**เปิดให้บริการแล้ว
วันนี้ !!**

**ศูนย์ดูแลและส่งเสริมสุขภาพชุมชนรอบ
คณะพยาบาลศาสตร์และวิทยาการสุขภาพ**

• มีคณาจารย์สาขาพยาบาลศาสตร์และสาขาสาธารณสุขศาสตร์พร้อมให้บริการ และให้คำแนะนำด้านสุขภาพ

- ✓ ให้คำปรึกษาด้านสุขภาพ
- ✓ ทำความสะอาดบาดแผล
- ✓ รักษาโรคเบื้องต้น
- ✓ วางแผนครอบครัวและผดุงครรภ์
- ✓ บริการอื่น ๆ ด้านสุขภาพ
- ✓ ส่งเสริมสุขภาพอนามัยและป้องกันโรค

วันเวลาให้บริการ
จันทร์ - ศุกร์ 8.30 - 16.30 น.

ติดต่อสอบถามหรือนัดหมายใช้บริการ
อาจารย์ ภาลิต ศิริเทศ ☎ 0930711697
ผศ.ดร.สุภารัตน์ ไชยเฉลิม ☎ 0619805475

5.6.4 Childcare facilities for students

Phetchaburi Rajabhat University places great importance on supporting the rights of students and staff to care for their children and on promoting holistic early childhood development. The university aims to create a supportive environment for learning, working, and family life balance.

Within the university, the Warm Community Health Promotion and Care Center, under the Faculty of Nursing and Health Sciences, provides health consultations and services for children and families. The center also organizes health promotion activities for students, staff, and members of the local community to enhance well-being and family health awareness.

In addition, the Phetchaburi Rajabhat University Demonstration School (Kindergarten Division) continuously conducts early childhood development programs. For example, the “Cooking Activity” for Kindergarten 1 students is implemented under the Learning by Doing approach, which helps develop physical skills, observation, teamwork, and creative communication. The activity also fosters strong relationships among teachers, parents, and students, supporting a nurturing and inclusive learning environment for young children.



5.6.6 Women's mentoring schemes

Phetchaburi Rajabhat University places great importance on supporting work-family balance among its personnel, particularly for staff and faculty members with young children. To facilitate this, the university has established an educational institution for the children of university employees the Phetchaburi Rajabhat University Demonstration School which accepts the children of staff and faculty at both kindergarten and primary school levels. This initiative enables employees to perform their professional duties effectively while ensuring that their children are cared for in a safe, nurturing, and developmentally appropriate environment.

The university administration, in collaboration with the Demonstration School, holds regular meetings with parents of kindergarten students to discuss matters related to child safety, English language development, and age-appropriate life skills, including health, discipline, and learning enjoyment. These efforts aim to promote the holistic growth and well-being of children through active parental engagement and institutional support.

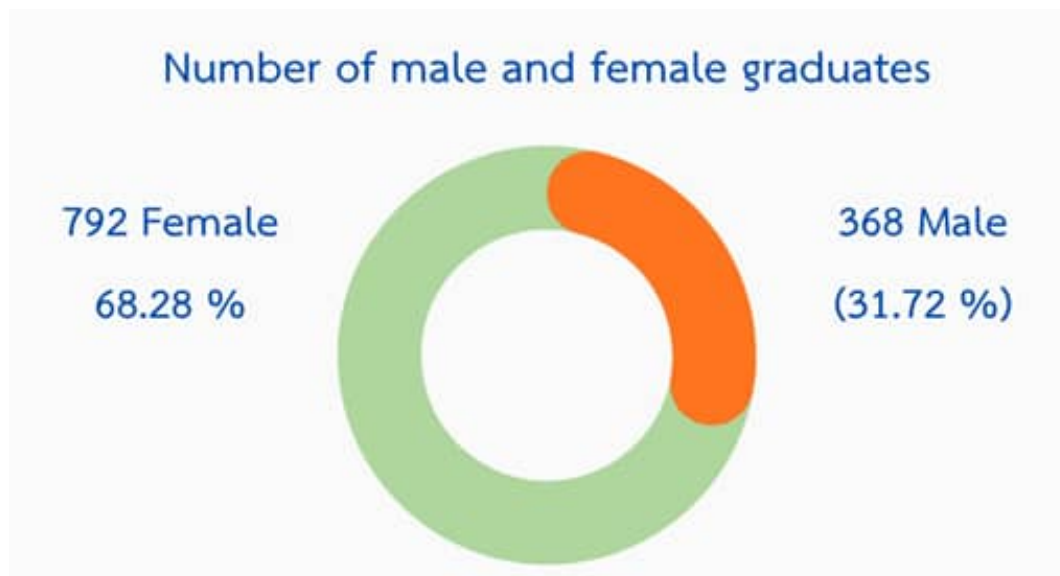


5.6.7 Track women's graduation rate

Phetchaburi Rajabhat University has established a systematic mechanism for tracking students' academic progress and graduation outcomes, managed by the Office of Academic Promotion and Registration. The system collects and analyzes graduation data disaggregated by gender and field of study to ensure evidence-based monitoring of educational equity.

Throughout their studies, every student is assigned an academic advisor, who provides guidance on both academic and personal matters, helping to foster student success and retention. The university ensures equal learning opportunities for all students, with no gender-based discrimination in access to education or academic support.

In the academic year 2024, Phetchaburi Rajabhat University recorded a total of 1,160 graduates, consisting of 792 female graduates (68.28%) and 368 male graduates (31.72%). This reflects the university's success in supporting and promoting educational opportunities for women, reinforcing its commitment to gender equality in higher education.



5.6.8 Policies protecting those reporting discrimination

Phetchaburi Rajabhat University has established a clear policy and practical guidelines for the protection of individuals who report cases of discrimination ([Whistleblower Protection Policy](#)). This policy aims to create a safe, fair, and discrimination-free learning and working environment for all members of the university community.

The policy forms part of the university's broader vision to become an institution of gender equality and lifelong learning, committed to promoting the rights of students and staff of all genders to access education and personal development equitably. It reinforces a system of transparent and accountable governance grounded in the principles of human rights, fairness, and inclusivity.



5.6.9 Paternity policy

Phetchaburi Rajabhat University has established a paternity leave policy to support fathers' rights and participation in childcare. Under this policy, male staff members are entitled to up to 15 working days of leave to assist their spouses during childbirth, in accordance with civil service regulations.

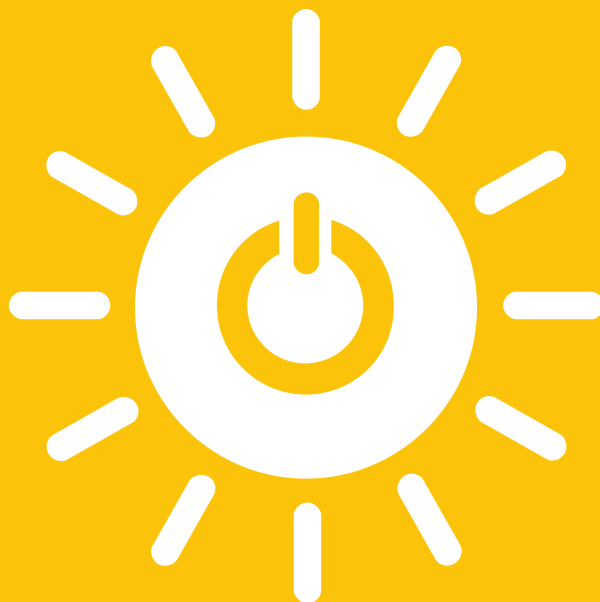
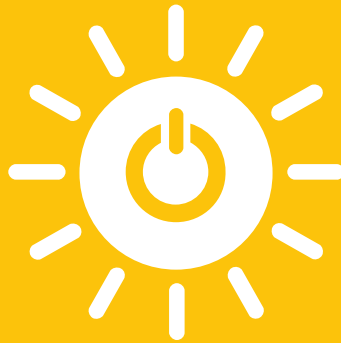
This policy aims to promote gender equality within families, encouraging fathers to take an active role in newborn care and parenting during the early stages of a child's life. It also helps to reduce the burden on mothers and foster shared family responsibilities between parents.

Through this initiative, Phetchaburi Rajabhat University reinforces its commitment to developing a family-friendly workplace culture that values work-life balance, mutual respect, and gender equity.





7 AFFORDABLE AND CLEAN ENERGY



7.2 University measures towards affordable and clean energy



7.2.1 Energy-efficient renovation and building

Phetchaburi Rajabhat University has implemented environmental, occupational health, and safety policies to move toward becoming a “Green University” and to encourage internal departments to develop into “Green Offices.” The university places great importance on the efficient use of energy and resources, the reduction of greenhouse gas emissions, and the promotion of clean and renewable energy to support sustainable development at both the institutional and community levels.

In the fiscal year 2025 (B.E. 2568), Phetchaburi Rajabhat University carried out renovation projects for the Phet Nam Nueng Building and the Demonstration School Building of the university. The renovation was designed with energy efficiency principles and included plans to install a solar cell system to serve as an alternative energy source within the buildings. This initiative helps reduce reliance on external electricity sources, lower energy costs, and enhance the efficiency of the university’s energy management system toward greater sustainability.

In addition, Phetchaburi Rajabhat University organized a seminar titled “Transforming Higher Education Institutions and Rajabhat Strategies for Local Development: Toward the Implementation Plan for Fiscal Year 2025.” The seminar brought together executives, office heads, program chairs, and relevant departments to set the direction of the university’s operations in alignment with institutional policies, strategic plans, and overall development goals. This included a strong emphasis on energy and environmental conservation, which forms a key component of the university’s integrated and sustainable management framework.





7.2.2 Upgrade buildings to higher energy efficiency

Phetchaburi Rajabhat University has developed an Operational Efficiency Enhancement Plan for 2024 and implemented building renovation projects to improve energy efficiency. The initiative focuses on systematic electricity management and reducing energy loss across university buildings, including lighting systems, air conditioning, and office equipment.

In the fiscal year 2024, the university installed a solar cell system on the roof of the Phet Nam Nueng Building to generate clean energy as an alternative to external electricity sources. This installation helps reduce energy costs and greenhouse gas emissions while increasing the university's self-sufficiency in renewable energy production.

In addition, the university upgraded its lighting system by replacing traditional fluorescent bulbs with energy-saving LED lighting, and encouraged all departments to use electrical appliances with energy efficiency labeling. These initiatives aim to enhance energy efficiency across all campus facilities as part of the university's ongoing commitment to energy conservation.

The implementation is an integral part of Phetchaburi Rajabhat University's Operational Efficiency Enhancement Plan for Fiscal Year 2024, emphasizing energy conservation and supporting the goal of becoming a Green University.

7.2.3 Carbon reduction and emission reduction process

Phetchaburi Rajabhat University operates under a systematic energy and environmental management framework, aiming to reduce carbon dioxide (CO₂) and greenhouse gas (GHG) emissions in all organizational processes. These actions are guided by the concept of a "Low Carbon and Green Campus", promoting a balance between development and environmental sustainability.

The university has implemented an Energy Management System (EMS) to continuously monitor, analyze, and report on campus energy usage. It also promotes the use of energy efficient technologies, such as replacing all lighting with LED systems in buildings and public spaces, and upgrading air conditioning and cooling systems to more energy efficient models.

To reduce carbon emissions from transportation, the university supports low carbon transport systems, including the use of electric shuttle vehicles (EV Shuttles) for short-distance travel and the installation of EV charging stations to facilitate the transition to clean energy vehicles.

Furthermore, Phetchaburi Rajabhat University places strong emphasis on waste management and green space expansion to help absorb carbon and reduce greenhouse gas emissions. Key initiatives include the Tree for Carbon Offset Project, which involves reforestation and tree-planting activities, and the Zero Waste Campus Project, which promotes waste segregation and recycling. Both initiatives play a significant role in reducing the university's carbon footprint.



In terms of participation and awareness, the university regularly conducts training sessions and awareness campaigns for staff and students to encourage responsible energy use and behavioral change.

Phetchaburi Rajabhat University has set a long-term goal to increase the proportion of renewable energy usage continuously, aiming to achieve 100% renewable energy consumption by 2037. This commitment reinforces the university's role as a leading higher education institution in sustainable and environmentally friendly energy management.



7.2.4 Plan to reduce energy consumption

Phetchaburi Rajabhat University has developed the Operational Efficiency Enhancement Plan 2024 (Fiscal Year 2024: B.E. 2567) as a strategic framework for effective management of energy and resources within the university. The plan aims to reduce the consumption of electricity, water, and fuel by at least 5% compared to the previous fiscal year, thereby supporting long term energy conservation and environmental sustainability initiatives.

The plan comprises the following key measures:

1. Electricity-Saving Measures

Efficient management of electricity usage across all departments, including:

- Adjusting air-conditioning temperatures to between 25 – 26 °C.
- Turning off electrical systems during lunch breaks and after office hours.
- Replacing electrical equipment with energy saving devices to optimize power efficiency.



2. Fuel-Reduction Measures

Promoting the use of Electric Vehicles (EVs) on campus and encouraging staff and students to participate in carpooling programs to reduce carbon emissions from daily commuting.

3. Reduction in Office Equipment Usage

Implementing the Electronic Document System (E-Document System) to replace paper-based processes, reduce material consumption, and improve operational efficiency.

4. Fuel and Official Travel Efficiency Measures

Planning travel routes in advance and maintaining vehicles in good condition to minimize fuel waste and ensure efficient energy use in official operations.

5. Communication Cost Reduction Measures

Encouraging the use of digital communication platforms such as email and video conferencing applications instead of telephones or postal services to reduce operational costs and resource consumption.

6. Water Conservation Measures

Conducting regular inspections and maintenance of water systems, installing water saving devices, and promoting water conservation awareness across all departments.

As a result of implementing these measures, the cost per production unit of Phetchaburi Rajabhat University in Fiscal Year 2024 showed a downward trend compared to Fiscal Year 2023, reflecting the effectiveness of the university's energy conservation strategies and the collective efforts of its personnel at all levels. This demonstrates the university's strong commitment to becoming a model institution for efficient and sustainable energy management.





7.2.5 Energy wastage identification

Phetchaburi Rajabhat University places strong emphasis on efficient energy management and the reduction of energy wastage across all operations. The university implements the Significant Energy Use (SEU) Assessment Criteria, in accordance with the Ministerial Regulation published in the Royal Gazette, to evaluate its performance and capacity for systematic energy efficiency improvement.

The university collects and analyzes energy consumption data from all departments, covering information such as electricity usage, operating hours of major equipment, and energy system efficiency measurements. This analysis identifies energy loss points and prioritizes areas for improvement, ensuring that energy use aligns with equipment functionality, operational requirements, and national energy efficiency standards.

Based on the evaluation results, the university has formulated and implemented Energy Conservation Measures and Energy Efficiency Improvement Plans, with continuous monitoring and assessment to ensure achievement of the goals set under its Green University Policy.

In addition, Phetchaburi Rajabhat University has installed a Supervisory Control and Data Acquisition (SCADA) System for real-time monitoring and control of energy use in key campus buildings and facilities. This system enables the detection of abnormal electricity consumption patterns, facilitates energy trend analysis, and allows for timely adjustment of energy control measures.

Regarding clean energy quality assurance, the university underwent an evaluation of its Solar Rooftop Power Generation Project, with a total installed capacity of 478.80 kilowatts across six buildings. The assessment was conducted by Active Consultant Co., Ltd. under the Thailand Voluntary Emission Reduction (T-VER) Program, confirming the effectiveness of the university's renewable energy system in reducing dependency on the Provincial Electricity Authority (PEA) grid and achieving tangible reductions in carbon dioxide emissions.

These initiatives demonstrate Phetchaburi Rajabhat University's strong commitment to developing an Integrated Energy Management System (IEMS) capable of effectively identifying and minimizing energy loss, while steering the institution toward the long-term goals of clean energy utilization and low-carbon operations.





7.2.6 Divestment policy

Phetchaburi Rajabhat University manages its financial and physical resources based on the principles of good governance, transparency, and environmental responsibility, with a strong commitment to sustainable development. The university does not hold shares, engage in joint ventures, or provide financial support to businesses related to fossil fuels, including coal, oil, and natural gas, or to any enterprises that may cause negative environmental impacts. Instead, the university prioritizes environmentally friendly and sustainable approaches in all its operations, expenditures, and procurement activities.

Under this commitment, Phetchaburi Rajabhat University has established an Energy Management Policy aligned with the principles of the Divestment Policy, as follows:

1. Prohibition of Investment in Fossil Fuel Industries

The university does not invest in businesses or funds related to fossil fuel energy. It encourages the allocation of budgets toward clean energy and environmental sustainability projects instead.

2. Promotion of Clean Energy Investment

Phetchaburi Rajabhat University has invested in solar rooftop systems across six buildings, with a total installed capacity of 478.80 kilowatts, and established EV charging stations on campus to promote renewable energy use and reduce dependence on external power sources.

3. Implementation of the Thailand Voluntary Emission Reduction (T-VER)

Program

The university participates in the T-VER scheme as an economic mechanism to demonstrate measurable reductions in carbon emissions and effective environmental investment.

4. Support for Green Finance and ESG-Oriented Investment

The university prioritizes budget allocation for green and sustainable projects, including energy efficient building construction, waste management system development, and the promotion of renewable energy usage, ensuring that all university operations align with the principles of Environmental Governance.

Through these measures, Phetchaburi Rajabhat University demonstrates its commitment to responsible investment and sustainable energy management under the vision of becoming a Green University, serving as a role model for advancing society toward a sustainable future.



7.3 Energy use density

7.3.1 Energy usage per sqm.

In Fiscal Year 2024 (B.E. 2567), Phetchaburi Rajabhat University had a total usable area of 228,395.09 square meters, with an overall electricity consumption of 22,400 gigajoules per year (GJ/year) equivalent to an average of 1,866 GJ per month and a total electricity expenditure of 28,177,406.84 baht.

This level of energy consumption reflects the university's effective energy management practices under its energy conservation policy, in line with the university's Green University development approach. Efforts are continuously made to reduce the energy use density per square meter through the installation of renewable energy systems, energy-efficient building renovations, and awareness campaigns promoting responsible energy use across all departments.

7.4 Energy and the community

7.4.1 Local community outreach for energy efficiency

In Fiscal Year 2024, Phetchaburi Rajabhat University continuously implemented community engagement and academic service projects aimed at transferring knowledge on renewable energy and energy efficiency to local communities. These initiatives were designed to promote public understanding of clean energy technologies and innovations, improve quality of life, and foster sustainable energy development at the community level.

Key activities conducted in 2024 included:

1. Workshop on "Renewable Energy Applications for Agriculture and Household Energy Cost Reduction"

Organized by the Faculty of Engineering and Industrial Technology at Bang Khem Subdistrict, Khao Yoi District, Phetchaburi Province, this project educated community members on the use of solar and biomass energy in agriculture, such as small-scale solar panel installation and biofuel production from household waste materials. The initiative aimed to reduce household energy costs and strengthen local energy security.



2. Community Forum on Renewable Energy Technology for Snake-Skin Gourami Production and Processing

Conducted under the Local Development Strategic Project in collaboration with the Bang Khem Snake-Skin Gourami Farmers and Processors Community Enterprise, the forum explored renewable energy applications such as solar and biomass energy to enhance production efficiency, reduce energy costs, and increase product value in the fish processing sector.



3. Training Program on “Adaptive Ethical Agriculture Skills”

Organized by the Faculty of Information Technology under the Lifelong Learning and Future Skills (Upskill/Reskill) initiative, this program focused on smart agriculture and the use of sensor-based control systems powered by solar energy for water management and production control. The program promoted energy efficiency and sustainability in agricultural practices.



4. Capacity Development for Village Environmental Volunteers (TASOM) in Prachuap Khiri Khan Province

Conducted by the Institute of Research and Promotion of Arts and Culture, this program trained community environmental volunteers in waste separation, carbon calculation, and data collection for certification under the Low Emission Support Scheme (LESS). Implemented in cooperation with Prachuap Khiri Khan Municipality and the Provincial Office of Natural Resources and Environment, the project strengthened community capacity in sustainable waste management and greenhouse gas reduction.





5. Community Service Project for Women's Career Development in Khao Yoi Municipality

Organized by the Department of Energy Engineering, Faculty of Engineering and Industrial Technology, this project provided vocational workshops for women in Khao Yoi Municipality, covering topics such as banana sheath and water hyacinth product making, material drying, and the use of natural substitutes. The initiative aimed to add value to local waste materials, promote sustainable livelihood opportunities for women, and encourage eco-friendly occupational practices consistent with the principles of sustainable resource utilization.



7.4.2 100% renewable energy pledge

Phetchaburi Rajabhat University has made a firm commitment to achieving 100% renewable energy use across its operations in pursuit of sustainability, greenhouse gas reduction, and energy conservation under the Sustainable Development Framework.

The university has formulated clear policies and operational strategies for clean energy management aligned with its goals of becoming both a Green University and a Green Office. These policies emphasize the reduction of dependence on fossil fuels and the continuous increase in the proportion of renewable energy used in all aspects of university operations.

Phetchaburi Rajabhat University has engaged in discussions with the Thailand Greenhouse Gas Management Organization (Public Organization) to develop operational frameworks under the Thailand Voluntary Emission Reduction Program (T-VER). The objectives of this collaboration include improving energy efficiency, reducing electricity costs, and minimizing the university's greenhouse gas emissions.

Under this framework, the university implemented a Solar Rooftop Power Generation Project across six campus buildings, with a total installed capacity of 478.80 kilowatts (kW). This renewable energy system provides an alternative source of clean electricity, reducing reliance on the Provincial Electricity Authority (PEA) grid while decreasing long-term carbon dioxide emissions and operational energy costs. The project has been certified under the Thailand Voluntary Emission Reduction (T-VER) standard, confirming its contribution to verified emission reduction.

In addition to solar energy utilization, the university actively promotes other forms of clean energy through the following initiatives:

1. Installation of Electric Vehicle (EV) Charging Stations within the university campus to support the transition toward clean energy transportation.
2. Research and Development of Renewable Energy Innovations, such as solar-powered water pumps for agricultural use and clean energy drying systems, which serve as both practical learning resources for students and transferable technologies for local communities.



Phetchaburi Rajabhat University has set a long-term goal to continuously increase the share of renewable energy in its total energy mix, with the target of achieving 100% renewable energy use by 2037. This commitment underscores the university's determination to serve as a leading example among higher education institutions in sustainable and environmentally responsible energy management.



7.4.3 Energy efficiency services for industry

Phetchaburi Rajabhat University provides academic services and technical consultancy to local industries and entrepreneurs to promote energy efficiency and reduce environmental impacts. These services include solar cell installation training, energy-saving drying technology transfer, industrial energy audits, and consulting for greenhouse gas reduction projects (T-VER). Such initiatives help enhance energy performance, reduce production costs, and support the development of clean and sustainable industries.

1. Faculty of Engineering and Industrial Technology represented the university at Farm Expo 2025, where it showcased the innovation "Coco Move: Coconut Inflorescence Water Conveyance System." The system was designed and developed to improve the efficiency of collecting and transporting coconut inflorescence sap from production sites. It significantly reduces both energy consumption and labor requirements in the production process, thereby lowering operational costs for agricultural entrepreneurs. This innovation exemplifies the university's role in developing and transferring technology to enhance energy efficiency in the production sector, aligning with the goals of modern agriculture and clean industry development.





2. The Department of Mechanical Engineering, Faculty of Engineering and Industrial Technology, participated in the 39th Conference of the Mechanical Engineering Network of Thailand (ME-NETT 39) under the theme “Mechanical Engineering Innovation in the AI Era.” The university was honored to serve as Co-Chairman of the conference, reflecting its academic excellence and leadership in promoting engineering innovations related to energy efficiency in industrial applications.

The conference provided an important platform for knowledge exchange among researchers, academics, students, and industrial practitioners to advance clean energy innovations and sustainable engineering technologies.



7.4.4 Policy development for clean energy technology

Phetchaburi Rajabhat University is committed to promoting the development of clean energy technologies and sustainable energy use as part of its institutional policy on becoming a Green University. This commitment is embedded within the university's Clean Energy Management Policy, which aims to increase the use of renewable energy sources and reduce dependence on fossil fuels across all campus operations.

Under this policy, the Department of Energy Engineering, Faculty of Engineering and Industrial Technology, in collaboration with the Vocational Training and Skill Testing Center, organized a practical workshop on “Solar Rooftop Installation.” The workshop was designed to enhance participants' knowledge and skills in clean energy technologies, particularly in solar photovoltaic systems, including principles of operation, system design, and installation in accordance with industrial standards.

The project was conducted in cooperation with private sector partners, who shared their real-world experience and technical expertise in renewable energy. This collaboration enabled participants including students, university personnel, and community members to apply the acquired knowledge and skills in their daily lives and professional practices sustainably.

The initiative represents a key component of Phetchaburi Rajabhat University's Clean Energy Technology Development Policy, driving forward the Clean Energy Transition through capacity building and practical implementation at both institutional and community levels.



7.4.5 Assistance to low-carbon innovation

Phetchaburi Rajabhat University promotes the development of low-carbon social innovations through collaborative projects with local agencies and communities. These initiatives aim to enhance environmental management, reduce greenhouse gas emissions, and drive the transition toward a green economy at the local level.

1. Establishment of a Community Environmental Management and Low-Carbon Learning Center, Yakao Subdistrict, Prachuap Khiri Khan Province

The Institute of Research and Cultural Promotion, in collaboration with the Village Natural and Environmental Conservation Volunteer Network (NECVN) and relevant government agencies, developed a waste management center into a model low-carbon community learning center. The center serves as a hub for disseminating knowledge on waste segregation, greenhouse gas reduction, and the implementation of the Low Emission Support Scheme (LESS) in local communities.



2. Development of Ban Khong Tabang Community Learning Center, Phetchaburi Province, into a Comprehensive Carbon Credit Learning Hub

In partnership with the Faculty of Humanities and Social Sciences, the university transferred knowledge related to Community Forest Carbon Credit development to strengthen the capacity of community leaders and local trainers in sustainable natural resource management. The project also supports income generation through forest conservation and aims to establish the center as a national model for community-based carbon credit learning.



Both initiatives reflect the pivotal role of Phetchaburi Rajabhat University as a hub for environmental innovation and low-carbon community development. They contribute to advancing the transition toward a Low-Carbon Society through education, technology transfer, and local empowerment.



7.5 Low-carbon energy use

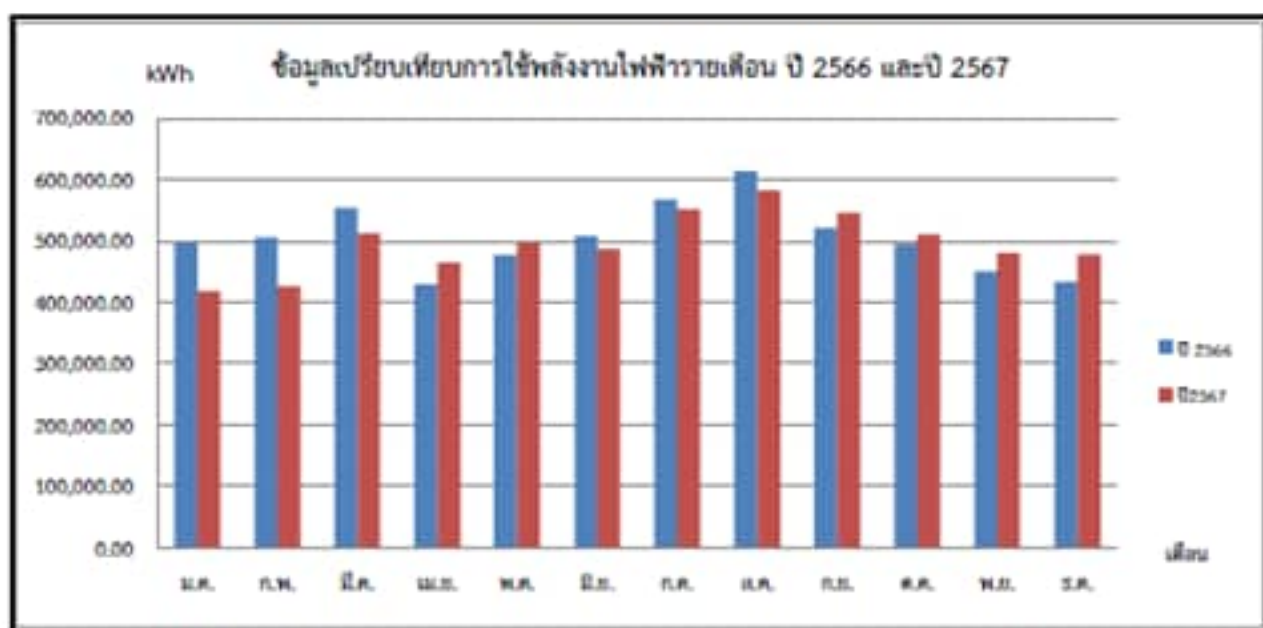
7.5.1 Total energy used

Phetchaburi Rajabhat University continuously monitors and records its internal energy consumption to assess energy efficiency and reduce greenhouse gas emissions in alignment with the Sustainable Development Goals (SDGs).

In fiscal year 2024 (B.E. 2567), the university recorded a total electricity consumption of 6,617,857.21 kilowatt-hours (kWh), equivalent to 23,824 gigajoules (GJ). In addition, the university promotes the use of low-carbon energy sources through the Solar Rooftop Power Generation Project, which currently operates across six buildings with a total installed capacity of 322,280 kilowatt-hours (kWh), or approximately 1,154 GJ per year. This initiative contributes to reducing dependence on fossil fuels and lowering long-term carbon dioxide emissions.

These efforts demonstrate Phetchaburi Rajabhat University's continued commitment to decreasing overall energy consumption while increasing the proportion of renewable energy use. The university's ongoing initiatives support its transformation into a "Green University" and advance the transition toward a sustainable low-carbon society.

กราฟแสดงการเปรียบเทียบข้อมูลการใช้พลังงาน



รูปที่ 6-5 กราฟแสดงข้อมูลเปรียบเทียบการใช้พลังงานไฟฟ้ารายเดือน ปี 2566 และปี 2567



17 PARTNERSHIPS FOR THE GOALS





17.2 Relationships to support the goals



17.2.1 Relationships with regional NGOs and government for SDG policy

Phetchaburi Rajabhat University plays a pivotal role in fostering collaborative partnerships with government agencies, local administrative organizations, the private sector, and development partners at both national and regional levels. These partnerships aim to drive sustainable development policies and practices (SDGs) through the integration of academic expertise, research, community engagement, and area-based management, leading to the formulation of concrete policies, strategies, and operational guidelines.

Such collaborations are designed to align the missions of higher education institutions with governmental and societal development goals, promoting evidence-based policymaking that effectively addresses local issues and enhances the quality of life for communities in the long term.

During the 2024 academic years, the university implemented a total of 17 academic and policy-driven collaborations / Memoranda of Understanding (MOUs). These partnerships covered diverse areas such as education, research, local development, public safety, social well-being, and workforce development aligned with Thailand's national strategies. Key initiatives include:

- ▶ 1. MOU on Research and Knowledge Management to enhance high-quality sea salt production and optimize the utilization of by-products.
- ▶ 2. Academic Collaboration Agreement on Youth Leaders for Sustainable Local and Global Communities to promote environmental awareness and leadership.
- ▶ 3. MOU on Road Safety Policy Implementation in partnership with the Phetchaburi Provincial Land Transport Office.
- ▶ 4. MOU on Leadership Network Development under the Change Leaders Network Project, FY2025 with the Phetchaburi Provincial Community Development Office.
- ▶ 5. MOU on Academic Cooperation for Research on Impacts of Social Transformation on Moral Ecosystem Models in Schools: A Case Study in Phetchaburi Province.



- ▶ 6. Research Collaboration Agreement under the RAINS for LCP Food Valley Program to enhance agricultural innovation and food value chains.
- ▶ 7. Professional Teacher Competency Development Project (MOU) between PBRU and the Phetchaburi Primary Educational Service Area Office.
- ▶ 8. MOU on Legal Education and Social Justice Collaboration with the Lawyers Council under the Royal Patronage and the Legal Network for Development.
- ▶ 9. MOU with the Student Loan Fund (SLF) for a pilot project providing educational loans for professional and vocational development.
- ▶ 10. Academic Cooperation Agreement for the “Phetch Innovation Teacher Program” to advance innovative teaching and learning practices.
- ▶ 11. MOU on the Development of Research and Innovation Personnel with the National Research Council of Thailand (NRCT) and 38 Rajabhat Universities, signed during the Thailand Research Expo 2025.
- ▶ 12. Academic Collaboration MOU between PBRU and the Faculty of Nursing, Burapha University.
- ▶ 13. MOU with Carl Zeiss Co., Ltd. for cooperation in advanced scientific instruments and technology development.
- ▶ 14. MOU on Academic and Professional Training in Hospitality and Service Management with The Regent Cha-Am Beach Resort, Regent Chalet Hua Hin, Vala Hua Hin – Nu Chapter Hotel, and Hua Hin Marriott Resort & Spa.
- ▶ 15. MOU with Narai Hospitality Group and its affiliated hotels (Lub D, Marasca, Le Méridien Phuket, Amanta Hotel Group, Riverine Hotel) to promote practical learning in tourism and hospitality.
- ▶ 16. Academic Collaboration Agreement with CP Aextra Public Company Limited (CP Extra) to provide students with experiential learning opportunities in business and management.
- ▶ 17. MOU with Samed Resorts Group, a leading resort operator in Rayong Province, to strengthen academic-industry cooperation in tourism and hospitality innovation.

Through these policy-oriented collaborations, Phetchaburi Rajabhat University demonstrates its role as a regional policy catalyst and sustainable development hub, connecting academia, government, the private sector, and civil society to advance local development, improve community well-being, and establish public policies aligned with the Sustainable Development Goals (SDGs).





17.2.2 Cross sectoral dialogue about SDGs

Phetchaburi Rajabhat University is committed to fostering cross-sectoral collaboration that facilitates the exchange of knowledge, operational approaches, and experiences in driving the Sustainable Development Goals (SDGs). The university works in partnership with government agencies, private organizations, local communities, and higher education institutions to strengthen human resource capacity, enhance the quality of teaching, research, and academic services, and ensure alignment with the social needs and changing national development context.

These efforts position the university as a platform for dialogue and mutual learning among multiple sectors, enabling the co-development of policy frameworks and practical approaches that contribute to achieving the SDGs in tangible and sustainable ways. PBRU emphasizes the creation of collaborative networks that extend across communities, regions, and the national level to promote shared learning and long-term impact.

Recognizing the essential role of connectivity among academia, government, the private sector, and civil society, the university actively promotes forums, dialogues, and knowledge-exchange activities as mechanisms for multi-stakeholder engagement in education, environment, social development, and economic sustainability.

During the 2024–2025 academic years, the university organized and participated in a total of 5 major cross-sectoral dialogues and collaborative activities aimed at integrating SDG principles into academic, community, and industrial contexts. These key events include:

- ▶ 1. Declaration of Commitment to Sustainable Development and SDG Leadership. Phetchaburi Rajabhat University signed a national declaration reaffirming its commitment to sustainable development leadership and alignment with SDG-oriented governance.
- ▶ 2. Network Meeting and Progress Review of the “RAINS for LCP Food Valley” Research Program 2024. A collaborative forum among universities, local authorities, and industries to review progress and promote innovation in sustainable food systems in the Lower Central Region.
- ▶ 3. Preparatory Meeting for the Confederation of Rajabhat University Students of Thailand. A national dialogue enhancing youth leadership, student participation, and collaboration among Rajabhat Universities toward sustainable education.
- ▶ 4. Academic Exchange on Electric Vehicle Curriculum Development. A joint academic forum between PBRU and RMUTR to exchange knowledge on EV curriculum design, technology integration, and workforce development.
- ▶ 5. User Group Conference on ELIB, MATRIX, and Institutional Repository (IR) Systems. Co-hosted with Suan Dusit University and private partners to share innovations in digital transformation and AI application in library services.



These initiatives reflect the role of Phetchaburi Rajabhat University as a central platform for cross-sectoral collaboration, fostering participation among academic institutions, government agencies, the private sector, and civil society. The university serves as a catalyst for developing policies, strategies, and innovations that align with the Sustainable Development Goals (SDGs) and contribute to long-term sustainable development at both local and national levels.



17.2.3 International collaboration data gathering for SDG

Phetchaburi Rajabhat University (PBRU) has continuously fostered international partnerships with overseas institutions and organizations to promote academic knowledge exchange, collaborative research, and professional development. These partnerships also include faculty and student exchange programs that enhance the quality of learning, teaching, and management in alignment with global academic standards.

In addition, the university actively engages in international cooperation on data collection, analysis, and sharing to support the monitoring and evaluation of progress toward the Sustainable Development Goals (SDGs). This initiative emphasizes the use of evidence-based data as a foundation for developing educational policies, teaching methodologies, and academic services that contribute to sustainable social and environmental outcomes.

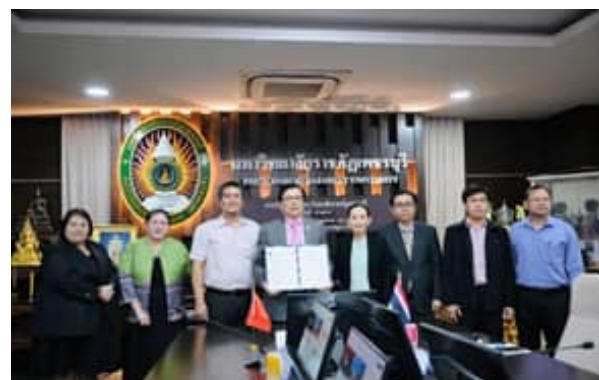
During the 2024 academic years, PBRU established 15 international collaborations and activities, including research, academic exchanges, and cultural programs, as follows:

- ▶ 1. 2024 UKM-PBRU Culture and Arts Exchange Program and signing of a Letter of Intent (LOI) on academic and cultural cooperation.
- ▶ 2. Visit by the Taipei Economic and Cultural Office in Thailand and students from National Pingtung University of Science and Technology, Taiwan.
- ▶ 3. Academic collaboration discussions with five universities in Liaoning Province, China.
- ▶ 4. Cultural cooperation expansion with Indonesian Institute of the Arts (STSI) Denpasar and Udayana ISI Denpasar University.
- ▶ 5. Language and cultural exchange at Southwest Forestry University, China.
- ▶ 6. MOU with Slovak University of Technology for joint research in civil engineering.
- ▶ 7. International academic collaboration with Yunnan Technology and Business University, China.



- ▶ 8. MOU between PBRU Faculty of Nursing and Allied Health, and St. Paul University Manila, Philippines.
- ▶ 9. Academic and research cooperation discussions with Semmelweis University, Hungary.
- ▶ 10. Partnership network building with I-Shou University, Taiwan.
- ▶ 11. Collaboration on Simulation-Based Learning innovation with Queen's University, Canada.
- ▶ 12. MOU with Minzu Dalian University, China, for academic exchange and student mobility.
- ▶ 13. Agricultural knowledge exchange program with Rovuma University, Mozambique.
- ▶ 14. Engineering collaboration with Hunan University of Technology, China.
- ▶ 15. Academic cooperation MOU with Xi'an Kedagaoxin University, China.

Through these partnerships, PBRU promotes joint research, data sharing, curriculum development, and exchange of faculty and students, fostering international understanding and innovation for sustainable development. The university continuously monitors and evaluates these collaborations to ensure tangible outcomes that enhance educational quality and contribute to global sustainability.





17.2.4 Collaboration for SDG best practice

Phetchaburi Rajabhat University has established strong collaborations with both domestic and international partners to review, compare, and develop best practices in advancing the Sustainable Development Goals (SDGs), particularly in education, research, community engagement, and public health. These partnerships aim to enhance academic quality toward international standards while embedding sustainability across teaching, research, and institutional management.

Under this framework, the university works with educational institutions, government agencies, and local organizations to exchange knowledge and develop applicable best practices for Thailand's socio-environmental context. The focus is on creating sustainable learning models, applied research, and environmentally responsible practices that support local and regional development. .

During the 2024 academic years, Phetchaburi Rajabhat University implemented a total of 6 key collaborative initiatives, as follows:

1. Training on Research Ethics and Good Clinical Practice (GCP) – enhancing researcher competency and adherence to international human research standards.
2. Cultural Heritage Collaboration – “Wachiraburi Dvaravati Myth Performance” at The Tamrong Heritage Festival, under the Digital Community Tourism Project with the Tamrong Subdistrict Administrative Organization.
3. Joint research with Assoc. Prof. Dr. Marian Luctkar-Flude, Visiting Professor from Queen's University, Canada, on developing a Virtual Simulation Game for nursing and health science students.
4. International Conference 2025 – “Simulation Evolved: Integrating Immersive Tech & Foundational Skills for Healthcare's Next Leap,” promoting global dialogue on healthcare simulation innovation.
5. Participation in national carbon reduction programs, including the Thailand Voluntary Emission Reduction Program (T-VER) and the Low Emission Support Scheme (LESS) under the Thailand Greenhouse Gas Management Organization (TGO).
6. Establishment of the “Waste Management Learning Center for a Low-Carbon Society” in Prachuap Khiri Khan Province to promote local sustainability and environmental education.



Through these initiatives, PBRU reinforces its role as a “Best Practice Hub” for sustainable development, fostering innovation in education, research, culture, and the environment. The university continues to transform academic knowledge into real-world solutions, advancing sustainable learning and community well-being at both regional and international levels.



17.2.5 Collaboration with NGOs for SDGs

Phetchaburi Rajabhat University places strong emphasis on partnerships with non-governmental organizations (NGOs) and civil society organizations at local, national, and international levels to advance the Sustainable Development Goals (SDGs).

These collaborations focus on youth empowerment, civic responsibility, ethics and integrity promotion, anti-corruption, community development, and sustainable livelihoods.

As an academic partner, the university contributes expertise, research, and learning mechanisms through service-learning projects, experiential programs, and volunteer initiatives. These activities foster positive social transformation across education, economy, society, and environment reflecting the university's mission to integrate knowledge with real-world social impact.

In addition, PBRU extends cooperation with private organizations in education, vocational skill development, decent employment, and sustainable tourism to enhance workforce potential and strengthen local economies.

During the 2024 academic years, the university carried out 5 major collaborative activities with NGOs and civil society partners as follows:

1. Language and Cultural Exchange with the International Youth Fellowship (IYF) – promoting intercultural understanding and publicizing the upcoming “2026 Global Camp” under the theme “Connecting Cultures, Inspiring Tomorrow.”
2. Follow-up Visit and Academic Monitoring of Scholarship Students under the “Sanjaithai Sujaitai Project” by the Sanjaithai Sujaitai Foundation.
3. Anti-Corruption Collaboration MOU – signed with the Anti-Corruption Foundation and the Anti-Corruption Reporters Association of Thailand to promote integrity and transparency in higher education.
4. Participation in the 2024 IYF World Camp Thailand – a global youth development program fostering leadership, resilience, and ethical awareness among university students.
5. Establishment of the Phetchaburi E-Sports Club – a joint initiative with the Phetchaburi Provincial Sports Association to promote teamwork, digital literacy, and discipline through competitive e-sports.



Through these initiatives, Phetchaburi Rajabhat University demonstrates its role as an active “SDG Partner,” working collaboratively with NGOs and private sectors to empower youth, foster social ethics, and drive sustainable community and economic development at both national and international levels.



17.4 Education for the SDGs

17.4.1 Education for SDGs commitment to meaningful education

Phetchaburi Rajabhat University prioritizes meaningful education as a foundation for improving quality of life and fostering sustainable local development under the framework of the Sustainable Development Goals (SDGs). The university aims to produce graduates who possess both knowledge and integrity, equipped with skills relevant to global transformation, and a strong sense of social responsibility.

Phetchaburi Rajabhat University has developed the Excellence Development and Specialist Manpower Production Plan 2023 – 2027 as a strategic roadmap to enhance educational quality and professional capacity. The university's vision states:

“By 2027, Phetchaburi Rajabhat University will be a leading university in food, tourism, and health sciences under the concept of a digital university integrating science for sustainable local development.”



Aligned with this vision, the Phetchaburi Rajabhat University focuses on producing high-competency graduates in science, food, tourism, and health disciplines through integrated knowledge application for sustainable local development. Guided by Section 7 of the Rajabhat University Act, B.E. 2547 (2004), Phetchaburi Rajabhat University emphasizes advancement in teaching, research, academic services, and cultural preservation.

The Phetchaburi Rajabhat University also promotes Lifelong Learning to develop 21st-century skills, ethical awareness, and social responsibility—empowering learners to become key contributors to national progress and long-term sustainable development.





17.4.2 Education for SDGs specific courses on sustainability

Phetchaburi Rajabhat University places strong emphasis on integrating the principles of Sustainable Development into teaching and learning across all levels and disciplines. The university aims to produce graduates with knowledge, understanding, and skills to promote sustainable social and environmental development.

At present, the university consists of nine academic faculties and one demonstration school, namely:

1. Faculty of Education
2. Faculty of Humanities and Social Sciences
3. Faculty of Science and Technology
4. Faculty of Management Science
5. Faculty of Engineering and Industrial Technology
6. Faculty of Information Technology
7. Faculty of Agricultural Technology
8. Faculty of Nursing and Health Sciences
9. College of Food and Hospitality Innovation

The university offers a total of 59 academic programs, comprising:

1. 49 Bachelor's Degree
2. 9 Master's Degree
3. 1 Graduate Diploma level

In the academic year 2024 (B.E. 2567), the university offered 4,117 courses. Among these, 495 courses equivalent to 12.0 percent are directly related to sustainability themes, such as environmental conservation, energy management, community development, circular economy, health, and well-being.

These results demonstrate the university's strong commitment to Education for Sustainable Development (ESD) through the integration of environmental, social, and economic dimensions into academic programs. This approach ensures that graduates develop sustainability awareness and are able to apply their knowledge to drive balanced local and national sustainable development.

17.4.3 Education for SDGs in the wider community

Phetchaburi Rajabhat University is a local development university dedicated to strengthening communities through education, knowledge transfer, and the application of appropriate technologies. The university has developed strategic frameworks to address local development challenges by integrating science, technology, innovation, and local wisdom to enhance community competence, create employment opportunities, and promote lifelong learning for learners of all ages.



Operating within the framework of Education for Sustainable Development (ESD), the university implements community-based learning activities, proactive academic services, and social innovation initiatives that directly respond to local needs in economic, social, and environmental dimensions. Collaborative partnerships are established across government agencies, private sectors, non-governmental organizations (NGOs), and civil society to transfer practical knowledge and technologies while equipping individuals with essential skills for modern living.

These initiatives demonstrate the university's role as a Sustainability Learning Hub, driving the achievement of sustainable development goals at both local and national levels. The university emphasizes public participation, vocational skill development, environmental conservation, and local economic strengthening, enabling communities to achieve self-reliance and sustainable growth aligned with the nation's long-term development agenda.



17.4.4 Sustainable Literacy

Phetchaburi Rajabhat University is committed to fostering sustainability knowledge, understanding, and skills among students, staff, and local communities. The university integrates the concept of sustainable development into all academic programs to cultivate environmental awareness, responsible resource use, and balanced living across economic, social, and environmental dimensions.

According to the course cluster classification for the 2024 academic year, the university offered a total of 4,117 courses, of which 495 courses (12.0%) were directly related to sustainability. These courses cover diverse disciplines such as environmental management, clean energy, sustainable agriculture, community health, green innovation, and the sufficiency economy philosophy. This demonstrates the university's systematic integration of sustainability principles across all levels of education.



Through this approach, the university enhances awareness and deep understanding of the Sustainable Development Goals (SDGs) among its students and personnel. It equips them to apply sustainability concepts in daily life, professional practice, and community development ultimately nurturing “Sustainable Citizens” who contribute to a balanced and sustainable future for the nation.





คำสั่งมหาวิทยาลัยราชภัฏเพชรบุรี

ที่ ๑๙๐๓ / ๒๕๖๖

เรื่อง แต่งตั้งคณะกรรมการพัฒนาอย่างยั่งยืน Sustainable Development Goal (SDGs) ประจำปี ๒๕๖๖

อาศัยอำนาจตามความในมาตรา ๓๑/(๒) แห่งพระราชบัญญัติมหาวิทยาลัยราชภัฏ พ.ศ. ๒๕๔๗ เพื่อให้การเข้าร่วมการจัดอันดับของมหาวิทยาลัยเพื่อการพัฒนาอย่างยั่งยืน Sustainable Development Goal (SDGs) ประจำปี ๒๕๖๖ จำนวน ๑๐ เป้าหมาย ได้แก่ SDG ๑ -SDG ๗, SDG ๑๓ - ๑๔ และ SDG ๑๗ เป็นไปด้วยความเรียบร้อย บรรลุวัตถุประสงค์และปฏิบัติงานตามพันธกิจของหน่วยงานให้เกิดประสิทธิภาพ และประสิทธิภาพสูงสุดต่อทางราชการ จึงแต่งตั้งคณะกรรมการพัฒนาอย่างยั่งยืน Sustainable Development Goal (SDGs) ดังต่อไปนี้

๑. คณะกรรมการอำนวยการ มีหน้าที่ ในการวางแผน วิเคราะห์ อำนาจความเสถียร และประสานงาน ในการดำเนินงานการพัฒนาอย่างยั่งยืน Sustainable Development Goal (SDGs) ประกอบด้วย

๑.๑ อธิการบดีมหาวิทยาลัยราชภัฏเพชรบุรี	ประธานกรรมการ
๑.๒ ผู้ช่วยศาสตราจารย์พจนารถ บัวเขียว	รองประธานกรรมการ
๑.๓ ผู้ช่วยศาสตราจารย์วิเชียร เข้มเงิน	กรรมการ
๑.๔ ผู้ช่วยศาสตราจารย์ ดร.พัชรินทร์ สุริยวงศ์	กรรมการ
๑.๕ อาจารย์ ดร.กฤษดา ตั้งชาวล	กรรมการ
๑.๖ อาจารย์ ดร.เมธาวิณ สารยาน	กรรมการ
๑.๗ อาจารย์วิรัช เ็นแปรม	กรรมการ
๑.๘ คณบดี/ผู้อำนวยการสำนัก/สถาบัน	กรรมการ
๑.๙ ผู้อำนวยการสำนักงานอธิการบดี	กรรมการและเลขานุการ
๑.๑๐ หัวหน้ากลุ่มงานพัฒนาระบบคุณภาพการศึกษา	ผู้ช่วยเลขานุการ

๒. คณะอนุกรรมการบริหารจัดการและขับเคลื่อนการทำงาน Sustainable Development Goal (SDGs) มีหน้าที่ รวบรวมผลการดำเนินงานทุกตัวชี้วัดเพื่อเข้าสู่กระบวนการจัดอันดับตามเกณฑ์การประเมิน จัดทำเว็บไซต์และฐานข้อมูลเพื่อรวบรวมผลการดำเนินงานผ่านระบบออนไลน์ ประกอบด้วย

๒.๑ ผู้ช่วยศาสตราจารย์วิเชียร เข้มเงิน	ประธานกรรมการ
๒.๒ อาจารย์วิรัช เ็นแปรม	รองประธานกรรมการ
๒.๓ อาจารย์ ดร.จุติพร อินทะนิน	กรรมการ
๒.๔ Mr.Wouter Hans Hessel Van Dijk	กรรมการ
๒.๕ นายเชษฐ ศรีรัมย์	กรรมการ
๒.๖ นายวันฉัตร วงศ์พานิช	กรรมการ
๒.๗ นางปิยนันท์ เสนะโท	กรรมการ
๒.๘ นางสาวน้ำฝน แสงอรุณ	กรรมการ
๒.๙ นางสาวฐิตินันท์ เด็กสุวรรณ	กรรมการและเลขานุการ

/๓. คณะอนุกรรมการ...

๓. คณะอนุกรรมการ หน้าที่ประสานงานผู้เกี่ยวข้องในการจัดทำข้อมูล รวบรวมข้อมูลที่เกี่ยวข้องกับ
ตัวชี้วัดที่รับผิดชอบ พร้อมทั้งจัดทำสรุปและนำเสนอผลการดำเนินงานตามตัวชี้วัดที่รับผิดชอบ ประกอบด้วย

๓.๑ ด้านความมั่นคงทางอาหารและเกษตร (Zero Hunger)

๑) คณะบดีคณะเทคโนโลยีการเกษตร	ประธานกรรมการ
๒) คณะบดีคณะวิทยาศาสตร์และเทคโนโลยี	รองประธานกรรมการ
๓) ผู้ช่วยศาสตราจารย์สุภัทรา กล้าสกุล	กรรมการ
๔) อาจารย์ ดร.ศิริวรรณ แต่งน้ำ	กรรมการ
๕) อาจารย์ ดร.ไกรฤกษ์ ทวีเชื้อ	กรรมการ
๖) อาจารย์ ดร.จุฑามาศ ทะแกแก้วพันธุ์	กรรมการ
๗) ผู้ช่วยศาสตราจารย์ ดร.บุษกร อู่วงศ์	กรรมการ
๘) อาจารย์ศุภมาส นันทสุนทร	กรรมการ
๙) นางพิทยาภรณ์ พิริยะสุขถาวร	กรรมการ
๑๐) นางพันทิพา เกตุพรหม	กรรมการ
๑๑) นายทศพล อิ่มคำเนิน	กรรมการ
๑๒) นางภควัน จันทนเสรี	กรรมการ
๑๓) นางสาวอโนมา อูโนทัยสกุล	กรรมการ
๑๔) ผู้ช่วยศาสตราจารย์ ดร.กนกรัตน์ จิรสังจานกุล	กรรมการและเลขานุการ

๓.๒ ด้านสุขภาพและความเป็นอยู่ที่ดี (Good Health and Well-Being)

๑) คณะบดีคณะพยาบาลศาสตร์และวิทยาการสุขภาพ	ประธานกรรมการ
๒) อาจารย์ ดร.เมธาวิณ สาระยาน	รองประธานกรรมการ
๓) นายกิตติภพ รัชหาราชกุล	กรรมการ
๔) อาจารย์กิตติศักดิ์ รุจิภาณุจันรัตน์	กรรมการ
๕) อาจารย์รัชดาวัลย์ จิตรพรกุลวสิน	กรรมการ
๖) อาจารย์สันธิ์คาพร กลั่นทอง	กรรมการ
๗) รองคณบดีฝ่ายกิจการนักศึกษาทุกคณะ	กรรมการ
๘) นายอำนาจ อนันพิทักษ์	กรรมการ
๙) นางจิราวัฒน์ ก่อเกิด	กรรมการและเลขานุการ
๑๐) นางสาวจามจุรี สูงท้าวหัว	ผู้ช่วยเลขานุการ

๓.๓ ด้านการศึกษาที่มีคุณภาพ (Quality Education)

๑) รองอธิการบดีฝ่ายวิชาการ	ประธานกรรมการ
๒) ผู้อำนวยการสำนักส่งเสริมวิชาการและงานทะเบียน	รองประธานกรรมการ
๓) รองศาสตราจารย์ ดร.กาญจนา บุญส่ง	กรรมการ
๔) รองคณบดีฝ่ายวิชาการแต่ละคณะ	กรรมการ
๕) อาจารย์ ดร.พิรศุขย์ บุญมาธรรม	กรรมการ
๖) อาจารย์ ดร.เวธกา เข้มเจริญ	กรรมการ
๗) นางปิ่นทอง อมรจติ	กรรมการ

/๘/ นางศิริวรรณ...

- | | |
|----------------------------------|---------------------|
| ๘) นางศิริวรรณ ปราชญ์ประยูร | กรรมการ |
| ๙) ว่าที่ ร.ต.ธนวัฒน์ บุคตะพันธ์ | กรรมการและเลขานุการ |

๓.๔ ด้านพลังงานสะอาดและจ่ายได้ (Affordable and Clean Energy)

- | | |
|--|---------------------|
| ๑) ผู้ช่วยศาสตราจารย์วิเชียร เข้มเงิน | ประธานกรรมการ |
| ๒) ผู้ช่วยศาสตราจารย์ ดร.กิตติมันท์ บุญรอด | รองประธานกรรมการ |
| ๓) ผู้ช่วยศาสตราจารย์ ดร.ปรัชญา มุขตา | กรรมการ |
| ๔) อาจารย์ชลิตล อินยาศรี | กรรมการ |
| ๕) ผู้ช่วยศาสตราจารย์ ดร.ขวัญชัย หนาแน่น | กรรมการ |
| ๖) อาจารย์ ดร.จุติพร อินทะนิน | กรรมการ |
| ๗) นายอภิวัฒน์ เพ็ชรสาท | กรรมการและเลขานุการ |

๓.๕ ด้านการรับมือกับการเปลี่ยนแปลงสภาพภูมิอากาศ (Climate Action)

- | | |
|--|---------------------|
| ๑) ผู้ช่วยศาสตราจารย์วิเชียร เข้มเงิน | ประธานกรรมการ |
| ๒) ผู้ช่วยศาสตราจารย์ ดร.กิตติมันท์ บุญรอด | รองประธานกรรมการ |
| ๓) ผู้ช่วยศาสตราจารย์ ดร.ปรัชญา มุขตา | กรรมการ |
| ๔) อาจารย์ชลิตล อินยาศรี | กรรมการ |
| ๕) ผู้ช่วยศาสตราจารย์ ดร.ขวัญชัย หนาแน่น | กรรมการ |
| ๖) อาจารย์เจมิจง ปารณารักษ์ | กรรมการ |
| ๗) นางสาวสุนันทา รักษาราชกูร์ | กรรมการและเลขานุการ |

๓.๖ ด้านหุ้นส่วนเพื่อการพัฒนา (Partnerships for the Goals)

- | | |
|------------------------------|---------------------|
| ๑) อาจารย์ ดร.กฤษดา ตั้งขวาล | ประธานกรรมการ |
| ๒) อาจารย์วิษระ เอ็นแปรม | รองประธานกรรมการ |
| ๓) นางสาวเจษฎารัตน์ กล้าศรี | กรรมการ |
| ๔) นายพิรณัฐ บุญคอย | กรรมการ |
| ๕) นางสาวศศิวิมล กาหลง | กรรมการ |
| ๖) นางสาวธิดิรัตน์ ชะเณ | กรรมการ |
| ๗) นางสาวชลธิพา สุขดี | กรรมการและเลขานุการ |

๓.๗ ด้านฐานข้อมูลวิจัย (Research)

- | | |
|--|---------------------|
| ๑) รองอธิการบดีฝ่ายวิจัยและนวัตกรรม | ประธานกรรมการ |
| ๒) ผู้อำนวยการสถาบันวิจัยและส่งเสริมศิลปวัฒนธรรม | รองประธานกรรมการ |
| ๓) รองคณบดีฝ่ายวิจัยของทุกคณะ | กรรมการ |
| ๔) อาจารย์ภาคย์ พรวหมณ์แก้ว | กรรมการและเลขานุการ |
| ๕) นางสาวทิพย์วรรณ ทองสัมฤทธิ์ | ผู้ช่วยเลขานุการ |
| ๖) ดร.บัณฑิตพงษ์ ศรีอานวย | ผู้ช่วยเลขานุการ |
| ๗) นางสาวชนานุช เงินทอง | ผู้ช่วยเลขานุการ |
| ๘) นายเลิศฤทธิ์ หัตถนร | ผู้ช่วยเลขานุการ |
| ๙) นางสาวณภัค เชื้อเพชร | ผู้ช่วยเลขานุการ |

/๔ คณะอนุกรรมการ...

๔. คณะอนุกรรมการ มีหน้าที่นำผลการดำเนินงานทุกตัวชี้วัด แปลเป็นภาษาอังกฤษ และจัดทำรูปแบบรายงานประจำปีตามเกณฑ์การประเมิน Sustainable Development Goal (SDGs) เพื่อนำส่งระบบออนไลน์ของ Times Higher Education สำหรับการจัดอันดับ The Impact Rankings

๑) อาจารย์วิษระ เย็นเปรม	ประธานกรรมการ
๒) ผู้ช่วยศาสตราจารย์แสงดาว ถิ่นहारวงษ์	รองประธานกรรมการ
๓) ผู้ช่วยศาสตราจารย์ปิ่นก้อง สีสลัมพรสิน	กรรมการ
๔) อาจารย์มีหวาน นาคจัน	กรรมการ
๕) อาจารย์ศรัณย์ ตรีคุณ	กรรมการ
๖) อาจารย์ศิริรินทร์ เฉลิมกิติ	กรรมการ
๗) อาจารย์ศรินทร์ สุขทรวิภาต	กรรมการ
๘) อาจารย์กรรณิการ์ ตาละลักษณ์	กรรมการ
๙) อาจารย์ ดร.จิตพร อินทะนิน	กรรมการ
๑๐) นางสาวชนิกานต์ ขวรุ่ง	กรรมการ
๑๑) นางสาวอุตินันท์ เด็กสุวรรณ	กรรมการและเลขานุการ

ตั้ง ณ วันที่ ๒๖ พฤศจิกายน พ.ศ. ๒๕๖๖


(ผู้ช่วยศาสตราจารย์ ดร.เสนาะ กลิ่นงาม)
อธิการบดีมหาวิทยาลัยราชภัฏเพชรบุรี